



ZHENG CHANG



正道百年 昌盛未来

1918-2018

热烈庆祝正昌成立100周年
Warmly Celebrate the 100th Anniversary of ZHENG CHANG

Vision

Work together to the best of our abilities to become the world's leading feed equipment, storage equipment and complete system solution provider. Help our partners to succeed and create a beautiful future together.

Core Value

Unity at Heart, Credibility, Solidarity, Value & Result-Oriented.



Deputy to the National People's Congress

Chairman of Jiangsu ZHENG CHANG Group

郝波

Hao Bo





Century-old ZHENG CHANG



Lead the Way to Happiness

FEED MACHINERY ZHENG CHANG CHINA

■ Company Profile	1
■ Specialized Companies of ZHENG CHANG	3
■ Projects Built by ZHENG CHANG	4
■ History	5
■ Care & Responsibility	7
■ Enterprise Honors	9
■ R&D Innovation	11
■ Professional Manufacturing	13
■ International Development	15



Jiangsu ZHENG CHANG Group was founded in 1918 with a history of 100 years. The company covers an area of 300,000 square meters, with more than 1,500 employees and more than 20 subordinates as well as more than 30 service agencies at home and abroad. ZhengChang is the first ISO9000 certification enterprise and the national "Keeping Promise & Honouring Contracts" enterprise in the industry of China and get through Europe CE certification and Russia Belarus kazakhstan CU-TR Certification; It is a national key high-tech enterprise and a national model enterprise with harmonious labor relations. It has won the honorary titles of "Famous and Excellent Brand in Asia" and "Symbolic Brand in Chinese Industry".

Jiangsu ZhengChang Cereal Oil and Feed Machinery Co., Ltd is one of the core enterprises directly subordinate to Jiangsu ZhengChang Group Co., Ltd. It is a feed machinery processing equipment provider and turn-key project contractor with feed industry as the main business. With constant innovation and development in the feed machinery industry, from the first domestic pellet mill developed in the early stage to the domestic maximum output (75t/h) 1208 model pellet mill, our business covers more than 80 countries and regions in the world, providing over 9000 sets of pellet mill for 65% of China's feed enterprises, and undertaking construction for domestic and foreign customers more than 3,000 high-quality feed projects, involving complete sets of livestock and poultry feed equipment, complete sets of piglet feed equipment, complete sets of aquatic feed, cattle or sheep feed equipment, complete sets of layer equipment, and complete sets of straw renewable energy equipment, comprehensive utilization of agricultural products, the overall breeding and reproducing project, poultry meat food processing, hops, fertilizer engineering projects, complete sets of waste disposal environmental engineering projects and other fields. After more than 60 years of research and development, ZhengChang has become the technology pioneer in China's feed industry.



(outside view of ZhengChang)

ZHENG CHANG Cereal Oil and Feed Machinery

FEED MACHINERY CHINA ZHENG CHANG WORLD ZHENG CHANG

ZHENG CHANG, as a very responsible enterprise, will continue to overcome the difficulties that industry and customers encounter, and with accumulating rich practical experience, we can quickly provide the best solution for customers. In the future development, ZHENG CHANG will adhere to the principle of "Work together to the best of our abilities to become the world's leading feed equipment, storage equipment and complete system solution provider. Help our partners to succeed and create a beautiful future together", and treat "Focus, Innovation, Credibility, Stability, Harmony with Heart, Value & Result-Oriented" as the core values, always do best in the development of the enterprise, and strive to constantly lead the industry development.

ZHENG CHANG, as a reliable partner of feed enterprises, will continue to focus on creating a stable and reliable harvest production line for the happiness of customers. To create value for customers and contribute to the development of feed and grain industry in China and even the world.

Specialized Companies of ZHENG CHANG

ZHENG CHANG is composed of several strong professional companies: ZhengChang cereal oil and feed machinery, the pioneer of China's agricultural and animal husbandry machinery and complete set of engineering; ZhengChang turn-key project company, providing design, production, installation and technical consulting services for complete feed engineering and supporting equipment; ZhengChang mould company, pellet mill accessories and professional training service institutions; ZhengChang electrical control company, responsible for electrical supporting and control of feed mill; Shanghai ZhengChang international company, serving the international business; ZhengChang Brazil company, developing feed engineering and biomass energy engineering in South American market. ZhengChang cereal oil and feed machinery, with 50 years of industry experience, has completed more than 3000 turn-key feed plants in the world, and won customers' praise with the fastest and best service. Not the largest scale, but the best comprehensive quality!



ZhengChang cereal oil and feed machinery

We have been specialized in research and development of feed equipment and feed engineering for 60 years, providing services and integrated solution for feed enterprises with stable, reliable and efficient quality.



ZhengChang turn-key project company

It has built more than 3000 feed quality projects in more than 80 countries and regions with output of 10-300 tons per hour.



ZhengChang mould company

Specializing in developing and sales of feed ring die, roller and other mould as a service enterprise, with leading processing capacity and quality in Asia.



ZhengChang electrical control company

Committed to all types of research, development, and manufacturing of industrial automation intelligent control technology, electronic weighing technology, liquid adding technology, etc., with domestic advanced testing, production and processing equipment and perfect process control and quality assurance system.



Shanghai ZhengChang international company

It is a comprehensive company mainly engaged in grain, oil, feed machinery, grain storage engineering and other international businesses. The company mainly serves the international feed industry. It has made brilliant achievements in the business of import and export trade, joint venture projects, overseas cooperative production and entrepot trade, and accumulated rich experience.



ZhengChang Brazil company

As a subsidiary of ZhengChang cereal oil and feed machinery, it relies on ZhengChang strong scientific research force and more than 300 high-tech new products, more than 700 patents and the world's leading ERP system. Providing 10-300 tons per hour high-tech feed machinery and engineering, storage machinery and engineering, biomass energy machinery and engineering service for customers in western and South America.

Projects Built by ZHENG CHANG

ZhengChang feed machinery and engineering is one of the most large-scale feed machinery manufacturers and the project solution providers in China with feed industry as the main business.

Feed engineering: livestock and poultry feed, aquatic feed, pet food, cattle and sheep feed, laying hens feed, piglet feed, medium and large pig feed, premix and other feed processing equipment;

Biomass energy and environmental protection engineering: wood waste processing, straw, peanut shell, bagasse processing, farm overall planning and waste utilization, farm organic fertilizer, complete set of pelleting project of urban garbage incineration and other special materials;

Automatic project: automatic intelligent control of feed mill, rice, flour, oil, wine processing, chemical, compound fertilizer production, building materials, cement production, metallurgy, steel plant, power plant, power transmission and transformation plant.



History

ZhengChang cereal oil and feed machinery, Asia feed engineering manufacturer and comprehensive solution provider, has been committed to the healthy, sustainable and stable development of China's feed industry, promoting China's economic development, and making efforts for the progress of the world's feed industry.



1956

It was restructured into the public-private joint venture Li lian oil and grain plant, engaged in grain, oil processing, and became the earliest domestic hammer mill producer and provided grain machine maintenance business.



1977

Successfully undertook China's first pellet feed project in Wuxi, starting the complete formula feed processing project.



1988

Pellet feed equipment was upgraded, the main product was developed with an output from 5TPH to 10TPH, the grain and oil machinery company was appointed by the Ministry of Internal Trade as a designated producer of feed machinery, starting the process of transferring to professional feed machinery production.



1994

Introduced foreign advanced processing technology and equipment to develop and manufacture 15-25 TPH feed pellet mill series and 20-100TPH hammer mill and ring die. In October, Jiangsu ZhengChang group was established.

1918



1918

Patriotic businessman established Oil Mill at No.225, Pier Street, Liyang, named "ZhenChang".



1973

Independently developed China's first model 45 pellet presser and other series products, used for bran pelleting.



1982

Successfully won an international bid to build Sheyang aquatic shrimp feed plant, striding forward into feed industry step by step. Successfully developed KYW32 pellet mill and mastered the whole plant pelleting technology with an output over 5TPH, adding new energy into the development of china feed industry.



1992

Established ZhengChang Grain, Oil Machinery and Feed Machinery Company, which comprises of 6 economic entities.



1998

ZhengChang moved to the new building in development zone and held the 80th anniversary celebration. Performed all-stock acquisition of CPM in China invested by USA Ingersoll Rand. Continued to expand feed equipment and ring die production scale and became a feed machinery production base with more advanced technology and equipment.



2008

Shanghai ZhengChang International Machinery and Engineering Co., Ltd. was established.



2013

Integrated the original silo company, drying company, conveying business to build Jiangsu National Grain Storage Engineering Company, the specialized integrated solution provider of more stable storage engineering. It was officially established in August.

2019...



2003

Successfully reformed the property rights system and became a private enterprise.



2010

Built China's first feed processing technology research and development base --- ZhengChang Engineering Technology Center, focused on feed processing to achieve the technology transformation of nutrition formula effect, and the research of technology and equipment upgrade and other areas.



2018

ZhengChang welcomed and celebrated its 100 year anniversary.

Care & Responsibility

In the development, ZhengChang receives the care and support of leaders, customers and friends at all places. It should be grateful, to shoulder the responsibility of contributing to the development of Chinese feed industry.



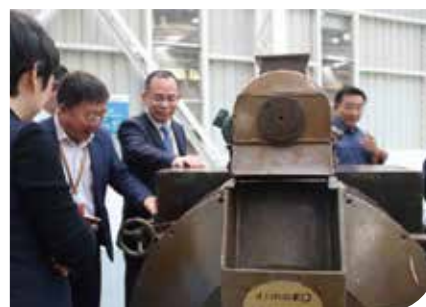
On October 18, 2018, more than 500 guests from ZhengChang's new and old customers, suppliers and domestic and foreign partners visited the Group's headquarters and the Grain Engineering Company to participate in the 100-year glory ceremony, where the guests could see the focus, technological innovation, and ingenuity.



Yang Zhenhai, secretary-general of China Feed Industry Association and director of the National Animal Husbandry Station, fully affirmed ZhengChang's continuous improvement of feed machinery products.



Mr. Yao Minpu, the vice chairman of Charoen Pokphand Group, gave a warm speech at the 100th anniversary of ZhengChang.



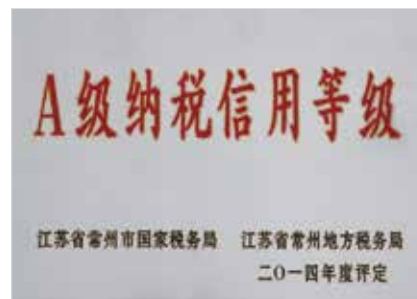
Chinese first pellet mill (type 45) became the focus of the audience.



- 1. Chairman Hao Bo attended the sixth meeting of the Brazilian BRICS leaders and the "2017 APEC CEO Summit" in Vietnam as the representative of the industry enterprises.
- 2. Chairman Hao Bo was received by Vietnamese President.
- 3. Li Qiang, member of the Political Bureau of the Central Committee (who was then secretary of Jiangsu Provincial Party Committee) came to ZhengChang for special investigation.
- 4. Chairman Hao Bo was elected as the representative of the National People's Congress as the first representative of industrial entrepreneurs in the Liyang area.
- 5. In the development, ZhengChang reflected the care for employees and won the title of "National Model Harmonious Labor Relations Enterprise". Vice Chairman Lu Ying attended the meeting and was kindly received and presented award by Xi Jinping.
- 6. In November 2011, under the leadership of the former Minister Gao of Agriculture, 128 chairmen or presidents of large feed enterprises in China paid close attention to the latest technology development and the industry promotion of ZhengChang, laying a solid foundation for the scale, intensive development of feed industry.
- 7. After ZhengChang's 9000th pellet mill went off the assembly line, the technology for 1208 pellet mill with the largest output (75t/h) in China passed national certification, won the industry and enterprise leaders' congratulations, and praise for its contribution to Chinese feed industry.

Enterprise Honors

Taking “creating value for customers” as the core principle, ZhengChang has been committed to honest operation, innovation, quality products and stable development, which approved by the society and customers.



1. Since 2005, for the long term integrity, ZhengChang was the only company in the industry continuously awarded the title of “National Enterprise of Keeping Promise & Honoring Contracts” by State Administration for industry and commerce.
2. ZhengChang was awarded the title of “National Important Hi-Tech Enterprise” by the Ministry of Science and Technology.
3. ZhengChang became “AAAA” credit enterprise of many banks.
4. As the lead company in Chinese feed machinery industry, ZhengChang has been a long-term research and innovation base for academic institutions.
5. Postdoctoral Technical Innovation Centre.
6. ZhengChang ranks the top taxpayer of Changzhou enterprises and was awarded as a “five-star key enterprise” by Changzhou Municipal Government.
7. For the high-efficiency products and good reputation in the international market, ZhengChang was awarded the title of “Asian Famous Brand”.
8. 300 products of 16 series achieved European CE certification.
9. ZhengChang passed through CU-TR certification of Customs Union of Russia, Belarus and Kazakhstan in 2015, and EAC is the unified logo.

Industry Standard

ZhengChang has been strengthening the innovation, research and development of products and technology. ZhengChang formulated 8 national standards such as "Safety regulations for dust explosion-proof of feed processing system", "Spiral ribbon feed mixer", "Flap feed cooler", "Biomass solid fuel" and so on, continuously promoting the rapid and healthy development of China's feed industry.



ZHENG CHANG Patents

Up to now, ZhengChang has developed 380 new products, including 40 national key products, 91 provincial high-tech products, 106 unprecedented items, and totally obtained more than 700 national patents.



Focus on technology R&D innovation, lead the industry to continuously develop

ZhengChang conducts scientific research and R&D innovation with 6% of annual sales volume. It has always adhered to the world's technological frontiers and industry development needs, focused on the continuous development of feed industry with professional R&D technology. ZhengChang insists on continuously attracting and training high-level professional and technical personnel in the industry, to ensure the continuous innovation of technology and lead the development of the industry. Among them, 3 senior scientific researchers enjoying State Council subsidy, 3 professors, 46 senior engineers and 17 doctors; more than 32 top R&D leaders in the fields of pelleting equipment, crushing equipment, mixing equipment, extruding equipment and piglet, livestock and poultry, special aquatic products, aquatic products, cattle and sheep, and biomass energy, with technical personnel accounting for more than 40% of the total number of employees, and more than 20 professional international experts.



Focus on research and development of high-tech products

Since the development of the first domestic pellet mill in 1973, ZhengChang has undertaken 40 science and technology items during the national 8th Five-Year, 9th Five-Year, 10th Five-Year, 11th Five-Year, 12th Five-Year, 13th Five-Year Plans, National Torch projects and Provincial Torch Projects. Up to now, ZhengChang has developed 380 new products, including 40 national key products, 91 provincial high-tech products, 106 unprecedented items, and totally obtained more than 700 national patents.



Build a strong scientific research team

In 2008, ZhengChang spent huge amount of money to build China's first feed processing technology research and development base Engineering Technology Building, including: equipment design, process design, civil design, automation design, warehouse design, dry design, mould design, feed formula, etc. Successively established Provincial Enterprise Technology Center, Jiangsu Food Safety Storage and Equipment Engineering Research Center and Post-doctoral Innovation Technology Center, etc. Signed strategic cooperation of production, education and research with dozens of colleges and institutes of China Agricultural University, Jiangnan University, Zhengzhou University of Technology, Academy of State Administration of Grain, Feed Research Institute Chinese Academy of Agricultural Science, Academy of State Administration of Grain Wuxi Branch.



Serve the feed industry with theoretical monograph

Successively published "Modern Feed Processing Engineering and Practice", "Modern Feed Processing Technology", "Technical Questions and Answers from the First Line of Feed Production", "Biomass Forming Fuel Processing Technology and Research", "General Technology Standard of Ring Die Pellet Mill". "China Modern Feed Engineering", participated in the compilation of more than 30 national industry standards such as "Safety Regulations for Dust Explosion of Feed Processing Systems", promoting the rapid and healthy development of China's feed industry.



ZhengChang Cereal Oil and Feed Machinery, one of China's largest feed machinery & processing equipment and whole plant project solution providers, mainly engaged 11 R&D directions around the seven feed industries, practicing quality equals value, is a highly responsible company, aiming at creating a bright future together with customers.

Scientific Research Institutes

Processing Technology Design:

- Process, 3D design
- Livestock and poultry feed process design
- Piglet and pig feed process design
- Aquatic feed, shrimp feed process design
- Pet food process design
- Cattle and sheep feed, hops process design
- Wood and straw forming fuel process design
- Premix, concentrate process design
- Compound fertilizer and small unit process design
- Paper briquetting process design
- Protein fermentation process design
- Environmental protection treatment process, sewage treatment process design

Equipment Design:

- Pelleting production line
- Crushing production line
- Mixing production line
- Extruding and expanding production line
- Screening production line

Civil construction Design:

- General layout design, plant shape design
- Hydropower design
- Civil construction design
- Steel structure design
- Fire prevention design

Engineering Electronic Control and Automation Institute:

- Engineering electronic control design
- Screen control design
- Packaging metering and automation design

Warehouse Engineering Design Institute:

- Steel silo engineering design
- Elevator and conveyor design
- Drying engineering design

Feed Formula Institute:

- Livestock and poultry feed formula R&D
- Aquatic feed formula R&D
- Ruminant Feed Formula R&D
- Special Animal Feed Formula R&D

Mould Design Institute:

- Ring die and roller processing technology
- New materials test
- Heat treatment technology

ZhengChang has rich experience in feed equipment manufacturing, can customize products for customers to meet various performance requirements, equipped with high-grade processing equipment and high-quality technology, as well as strict quality supervision system.



■ Spraying workshop



■ Components assembly workshop



■ Paint Spraying workshop

- Cylindrical grinders
- CNC lathe
- Wire-electrode cutting
- CNC Automatic grinder



■ CNC lathe



- Welding robot
- Corrugated plate production line



- Large diameter vacuum heat treatment production line
- Japanese continuous quenching production line
- Germany four-axis gun drill



International Development

In order to better serve the global market, ZhengChang Cereal Oil and Feed Machinery set up Shanghai ZhengChang International company and ZhengChang Brazil Company. ZhengChang has achieved European CE and Russian certification, constructed more than 800 engineering and over 5000 equipment projects for over 3000 international customers. ZhengChang has built a number of factories for international agriculture and animal feed groups like Jiaji, Xijie, CP Group, ADM, Louis Dreyfus, Conti, Bunge, ABB, ABNA, INVE, etc. Also, it has cooperated with the listed Dabaco Group in Vietnam for seven times, to help it lead the feed market.



The Agent and Key Customer Association in 2011



Business men of feed machinery industry from 22 countries in Europe, the Middle East, the Americas, etc., gathered to join the second Agent and Key Customer Association of ZhengChang group.



ZHENG CHANG centennial celebration in 2018.



Signed a strategic cooperation agreement with Louis Dreyfus, France in 2014.



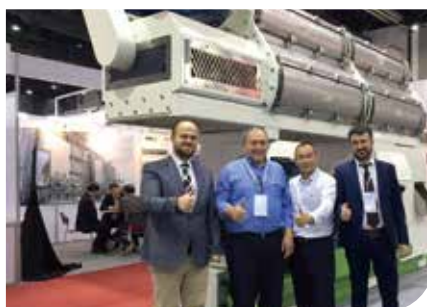
Cooperated with Dabaco Group, Vietnam for the seventh time.



The mayor of ChatmKent, Canada, visited ZhengChang.



Iran agents blessed century-old ZhengChang.



ZhengChang products were praised by customers at VICTAM, Thailand.



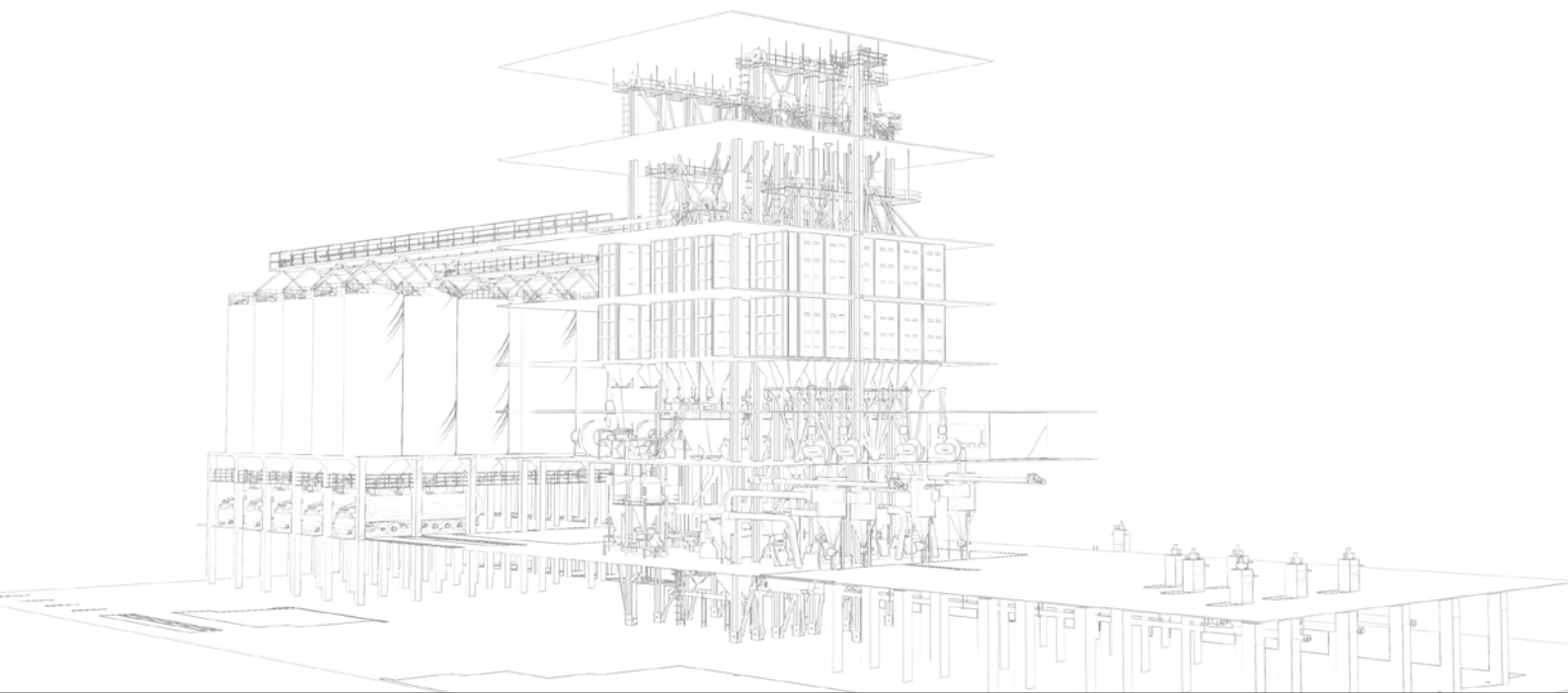
Indonesia 500TPD corn drying project.



ZhengChang was awarded "China Brand of Year 2007", the only one in China feed machinery industry.



In December, 2018, ZhengChang Group and CITIC successfully signed a contract for the feed production line of the Belt and Road Belarusian agro-industrial complex project.





A Production Line for Bright Future

Stable, Reliable, Environmental, Profitable

■ ZhengChang Engineering — A Harvest	19	■ Aquatic Feed Engineering	37
Production Line for Happiness		Shrimp Feed Processing Technology	39
■ Reliable Management —	21	Extrusion Processing Technology	41
Three-dimensional Digital/Prefabricated		■ Premix Engineering	43
Parts		Premix Processing Technology	45
■ Reliable Management — Process	22	■ Cattle and Sheep Feed Engineering	47
Control of Feed Engineering		Cattle and Sheep Feed Processing	49
■ Reliable Management — Information	23	Technology	
Management Software		■ Pasture Engineering	51
■ ZhengChang Feed Engineering	24	Pasture Processing Technology	53
■ Livestock and Poultry Feed Engineering	25	■ Biomass Energy Engineering	55
Livestock and Poultry Feed Processing	27	■ Large-scale Storage Engineering	57
Technology		■ Automation Control System	59
■ Piglet Feed Engineering	29		
The Fourth Generation Maturing Feed	31		
Processing Technology			
Piglet Feed Expander	32		
Pig Feed Processing Technology	33		
■ Laying Hens Feed Processing	35		
Technology			

ZhengChang Engineering — A Harvest Production Line for Happiness

Since 1992, ZhengChang has undertaken more than 3000 feed projects involving livestock and poultry feed, pet food, premix, concentrate, hops, fertilizer, storage engineering, wood pelleting and waste disposal.

ZhengChang not only researches efficient and intelligent feed machinery, helps feed enterprise build differentiated technology, but also strictly controls food safety, and is responsible to animals and people.

ZhengChang is a comprehensive solution provider integrating R&D, production, marketing and service. ZhengChang Feed Project provides you a stable, efficient, environmental and safe production line.



Provide employees with a stable, reliable, durable-income ZhengChang feed production line

- A stable, reliable and durable automated production line brings more opportunities and higher returns to employees.
- Systematic and high-quality service can solve all kinds of difficult problems for customers quickly and thoughtfully.
- Diversified training can train new technical talents for customers and help enterprises develop together.



Provide the shareholders with more profits

- High-efficiency equipment and stable team create high-quality products.
- A factory with high manufacturing efficiency can make the team closer and make the enterprise profitable easily.



Provide distributors and farmers with high-quality feed

- Feed pellets are uniform, has smooth surface and incision.
- Feed has good grinding fineness, high maturity and good feed-meat ratio.



Create benefits, enhance value and realize dreams for operators

- Stable efficiency and reliable quality to help enterprises improve their values.
- A profitable factory to help you realize your dreams.



Provide enterprises with an environmental, clean and beautiful factory

- Reasonable overall design layout, security countermeasure for the environmental protection and fire protection.
- Safe, standard, high-quality, hygienic and reliable projects. The process has strong applicability and can effectively avoid cross-contamination.
- Standardized fabrication of prefabricated parts and on-site installation can greatly improve the project progress.
- Low operation cost and high benefit.



A harvest production line that can create a bright future makes you happier!

- ZhengChang has built 35 feed projects for CP Group, the world's largest feed enterprise, including 3 sample projects.
- ZhengChang has cooperated with New Hope Group, the largest feed enterprise in China, for over 200 projects, creating more value for it.
- ZhengChang has built five high-quality piglet feed production lines for Kingsino, which has reached the listed requirements within 3 years after completion.
- The maturing piglet feed production line constructed for Conti, is rated by their general manager as "the best piglet feed production line in the world" for the high profits.



Provide customers with efficient feed equipment

- Beautiful appearance: Japanese excellent production management mode, using acid pickling and phosphating coating process, effectively ensuring the appearance of equipment.
- Stable performance: pellet mill can achieve long-term trouble-free, non-stop operation, continuously creating benefits.
- Long service life: decades of service life, over a ten-year pellet mill is still in production.
- Reliable efficiency: the productivity of main equipment is increased by more than 15% compared with the same power type.
- Long-term ZhengChang service and training helps you quickly master equipment operation and production management skills.

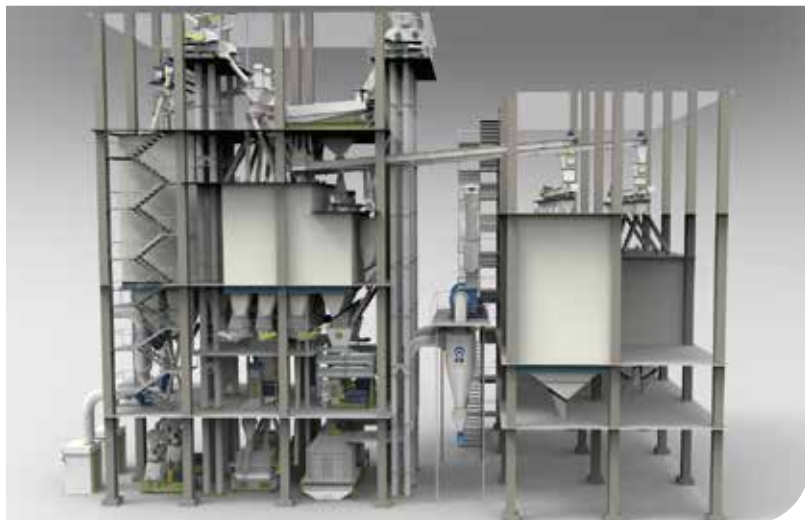


Provide each of them with unique profit space

- Reasonable design, time-saving, labor-saving, economical and space-saving.
- Realize network management control-unmanned plant.
- The factories operate simply, firmly and effectively, creating ample profit space for them.

Three-dimensional Digital Design

Greatly eliminate design errors! Using international advanced design software, modular, parametric design, and three-dimensional display model, make it clear in the design stage. Automatically generate engineering drawings, section drawings and non-standard prefabricated drawings, to eliminate errors and ensure design refinement.



Prefabricated Parts

The 86 major categories and 450 prefabricated parts are designed with three-dimensional standardized modules to eliminate errors.

Reduce the material dead angle of connecting links, reduce residue, to facilitate operation and maintenance. Standardization production in prefabricated part factory, on-site assembly, greatly shorten the installation period, improve the quality of project.



Process Control of Feed Engineering

There are **255** nodes during ZhengChang feed engineering process management and control, to completely control the progress, safety and quality of project construction. Company leaders can know the progress in real time, and make accurate decisions quickly.

Each project can also make a lateral comparison, automatically generate the achievement rate of project progress, providing managers with intuitive data.

ID	任务名称	状态	开始日期	结束日期	负责人
1	原料采购	已完成	2017-03-01	2017-03-01	张三
2	配方设计	进行中	2017-03-02	2017-03-05	李四
3	生产加工	待开始	2017-03-06	2017-03-10	王五
4	质量检测	进行中	2017-03-08	2017-03-12	赵六
5	成品入库	待开始	2017-03-13	2017-03-15	孙七

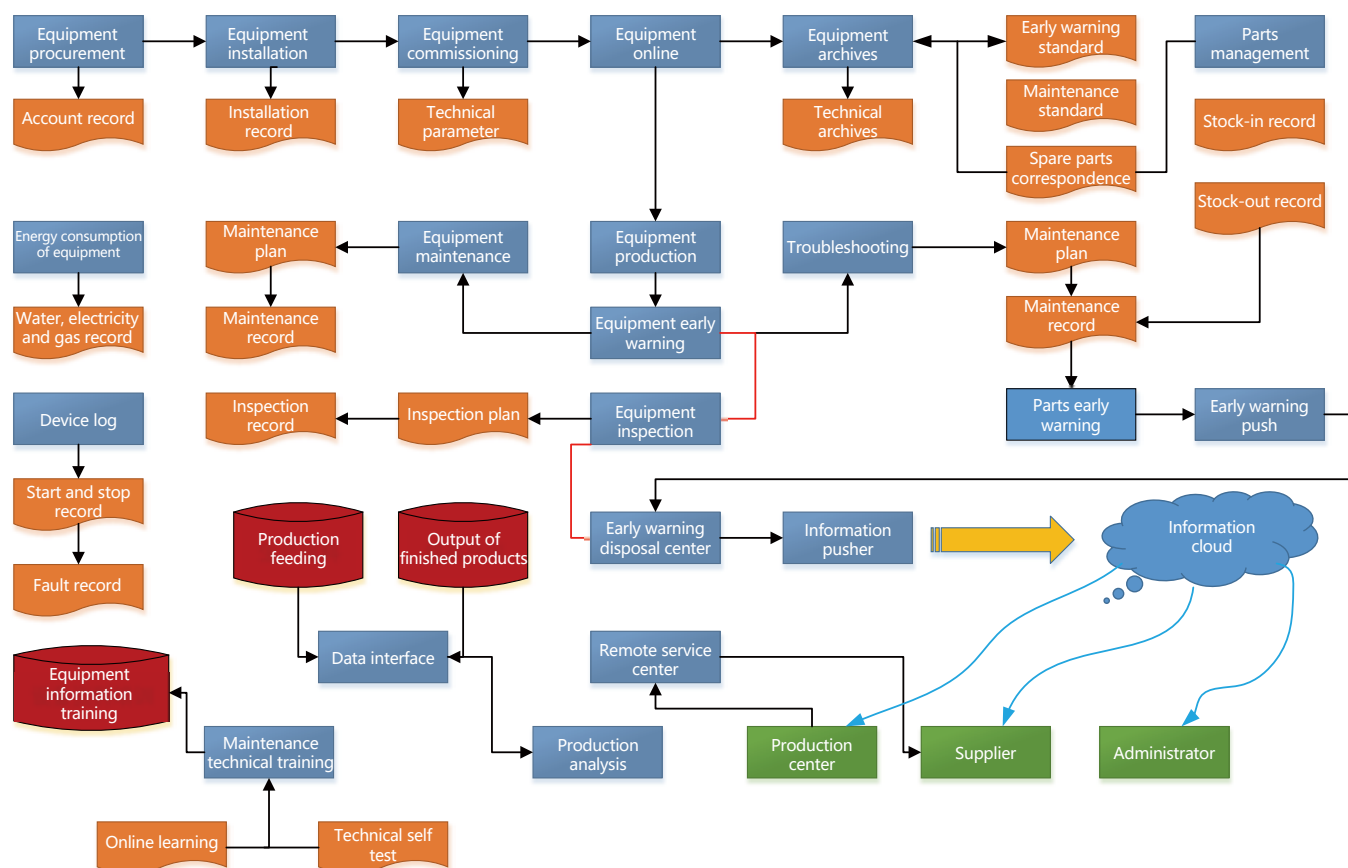
序号	任务名称	负责人	报告日期
1	原料采购	张三	2017-03-01
2	配方设计	李四	2017-03-02
3	生产加工	王五	2017-03-03
4	质量检测	赵六	2017-03-04
5	成品入库	孙七	2017-03-05

序号	任务名称	负责人	报告日期
1	原料采购	张三	2017-03-01
2	配方设计	李四	2017-03-02
3	生产加工	王五	2017-03-03
4	质量检测	赵六	2017-03-04
5	成品入库	孙七	2017-03-05

Information Management Software

- The production, supply and marketing management system of ZhengChang Feed Factory achieves the data management of capacity and efficiency through equipment operation.
- Avoid the disconnection between management software and production equipment, so that the management of software can be quantified and visualized, and can be used for daily management and assessment.
- Convenient for departments to get accurate information in time, realize the flat management, optimize the business processes, and improve the management level of enterprises.
- Shorten product delivery time, improve service level for customer, reduce costs, improve profitability, and greatly improve product quality.
- Help enterprises to cultivate a group of excellent business backbone and managers, enhance the core competitiveness of enterprises.
- The managers and bosses of enterprises may completely shake off the heavy and trivial daily business, so as to devote more energy to the strategic development of enterprises, and ensure the long-term development.

Production and processing equipment management system



ZhengChang Feed Engineering

- Built more than 3000 feed harvest production lines with the output of 10-300 tons per hour over the world.
- Provide the shareholders with more profits.
- Provide enterprise with stable, reliable production line with efficiency increased by 15%.
- ZhengChang pellet mills have been sold over 9000 units, 6800 global feed companies are using ZhengChang equipment.
- ZhengChang, the leader of China's largest feed pellet mill(75t/h)!

In 1977, undertook China's first feed project — Wuxi Grain Depot.

In 1992, undertook China's first CP feed project. From then on, undertaken 33 feed projects in total for CP, including 3 sample projects.

The maturing piglet feed production line constructed for Conti, is rated by their general manager as "the best piglet feed production line in the world".

ZhengChang has built a number of factories for enterprises like Tyson, ADM, ABNA, Vietnam Dabaco, etc.

New cattle and sheep ruminant feed engineering, special pellet mill for cattle and sheep feed, create value with special processing technology.

Special laying hens feed engineering, sterilize material to improve the feed quality.



Livestock and Poultry Feed Engineering

ZhengChang provides you with comprehensive technical services of plant layout, process design, equipment manufacturing, installation, commissioning, electrical control and operation training, and technical formula for livestock and poultry feed with the output up to 1 million tons.



Higher efficiency, lower energy consumption

- The hammer mill uses multi-cavity patented design, equipped with special wind network, has good grinding fineness and high output, and can also reduce the moisture loss of raw materials caused by grinding. Jiangsu Xinghua Baisuihang Company uses ZhengChang SFSP 138*50F hammer mill, 200kW, sieve aperture 1.5*3+2.0*1, output 23.7t/h, for crushing corn.
- Mutipoint intake conditioner helps material make full contact with steam, increases the maturing effect and promotes the digestion and absorption of animal.
- After the acquisition of the granulating factory in China invested by CPM U.S., the pellet mill has higher quality and efficiency increased by 15%.
- Annual production capacity of 100,000 tons, feed profit of 30 RMB/ton, the annual increased profit: $100,000 \times 15/100 \times 30 = 450,000$ RMB/year.
- ZhengChang's unique feed quality optimization system can real-time online control finished the moisture product, to create more value.
- 3D digital design: plant layout, equipment layout and accurate planning. The 360° visual design of workshop details greatly minimize design errors!
- Optional automatic control system of pellet mill and hammer mill, remote monitoring and alarm, automatic palletizing equipment, etc. , to improve production efficiency and reduce labor costs.



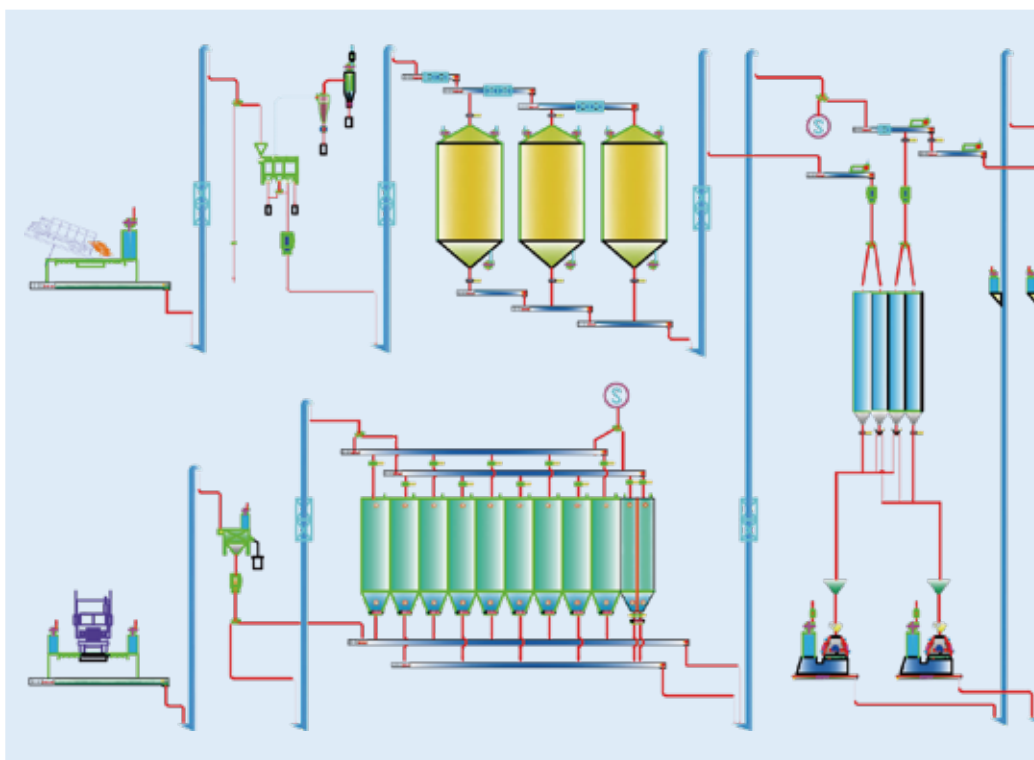
Livestock and Poultry Feed Processing Technology

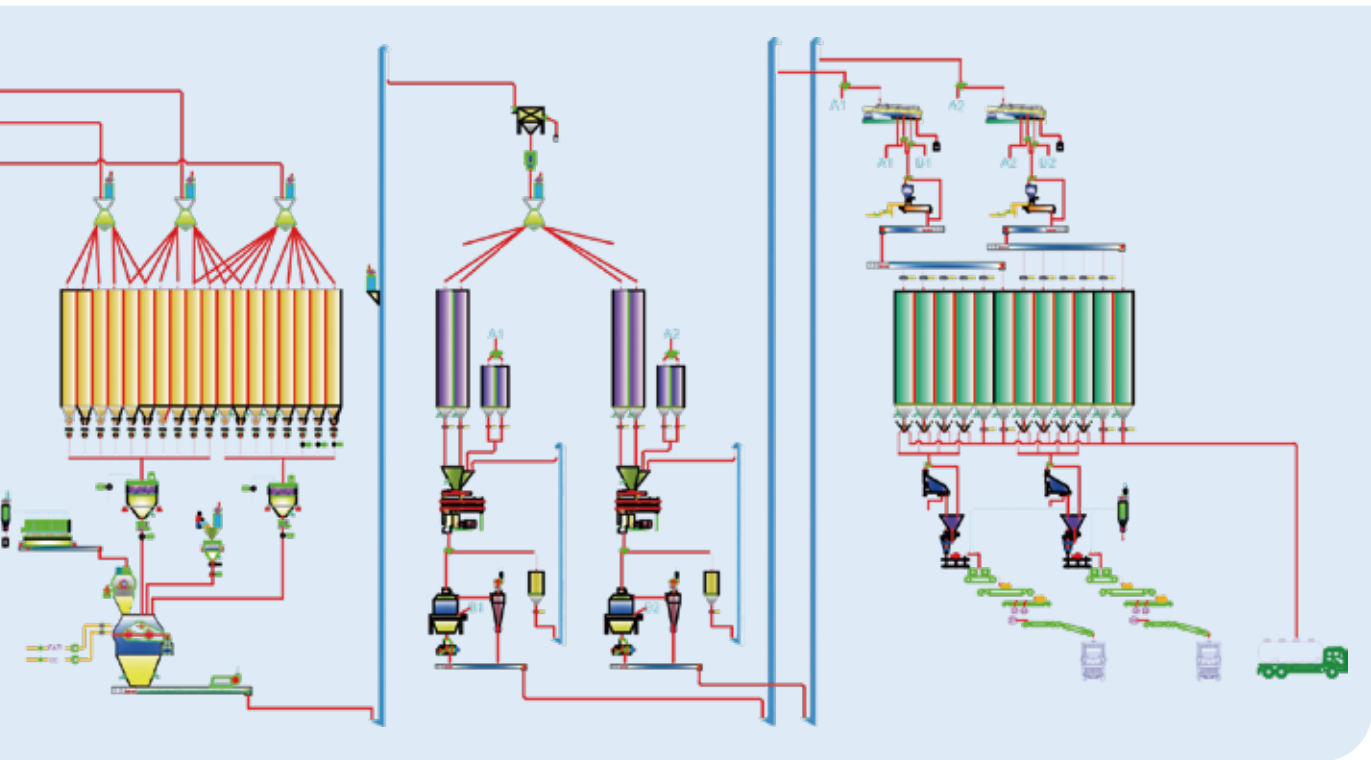
(Provide corresponding equipment according to customer needs)



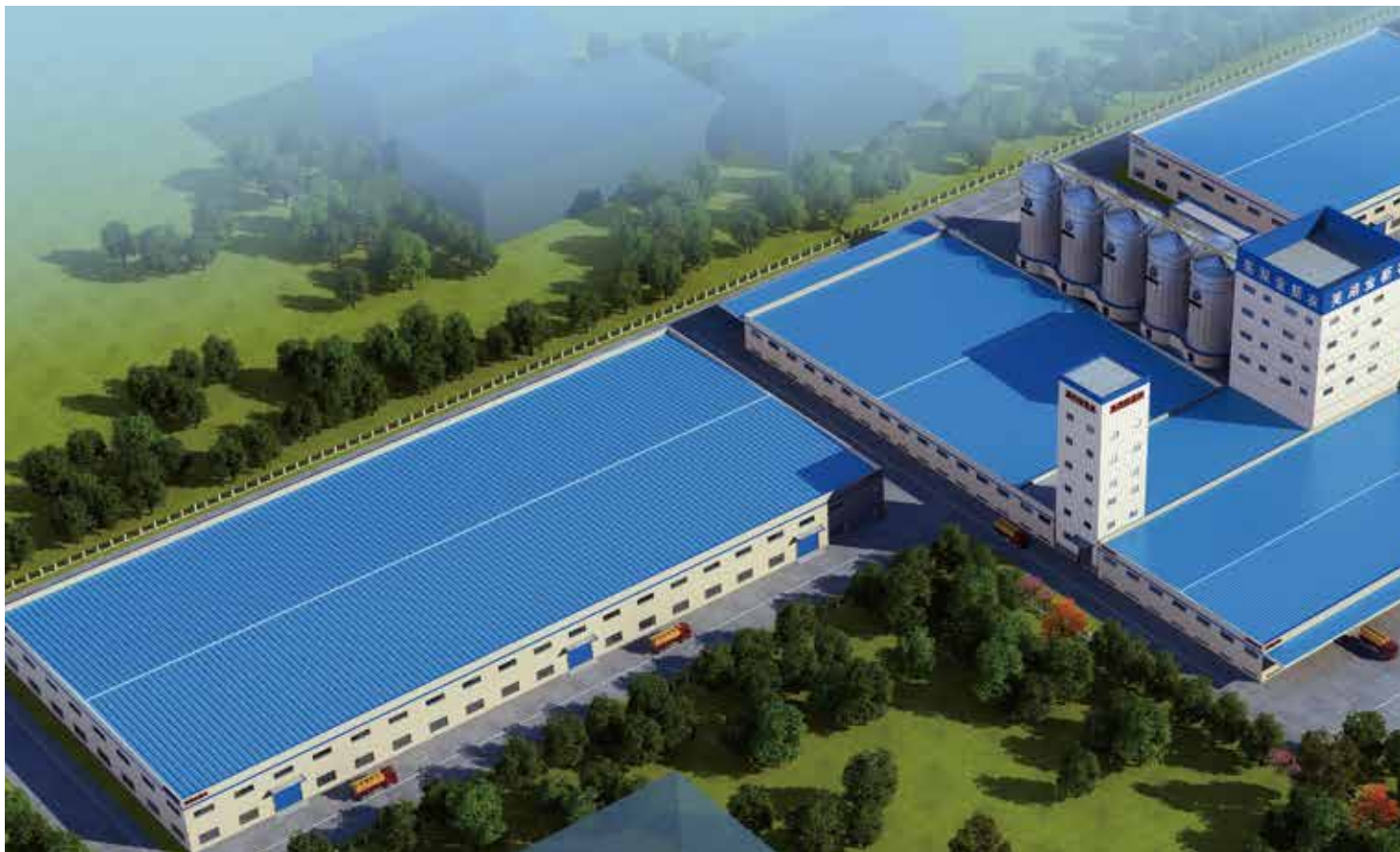
ZhengChang livestock and poultry feed production line

- 10-80t/h chicken feed production line
- 10-80t/h duck and goose feed production line
- 10-30t/h rabbit feed production line
- 10-160t/h poultry and pig feed production line





Piglet Feed Engineering





Kingsino: ZhengChang has built 6 high-quality piglet feed production lines for it, which has reached the listed requirements within 3 years after completion. Therefore, ZhengChang has become the most trusted partner of Kingsino.

COFCO Group: it uses 2 maturing pig feed production lines constructed by ZhengChang, the economic benefit is significantly increased by 50 million RMB in a whole year.

Conti: Wuhan Conti uses a maturing pig feed production line constructed by ZhengChang, the piglet feed prices 1400RMB/ton. It is rated by their general manager as "the best piglet feed production line in the world".

Continental Grain Company: the biscuit feed produced by maturing technology has become more popular with many farmers. The unique material biscuit has good palatability, high feed intake, easy digestion, quick weight gaining, creating differentiated competitive advantages for the enterprise.

Shandong Laibeite: the whole production line uses ZhengChang maturing patented technology to produce "fragrant, sweet and crisp" feed. Only four months after putting into operation, it was in short supply. Within three months, the company introduced a maturing technology production line with an output of 20,000 tons per month again, standing out from 43 feed enterprises in Junan County and became the regional champion.

Aonong Group: it introduced ZhengChang maturing process three times a year, achieving success in production and marketing in a short time, and opening a new chapter of enterprise profits.

Anhui Jinmu: it also introduced the maturing production line to meet the market competition and win opportunities.

Hunan Zhenghong: the unique process of maturing piglet feed helps it break through the production bottleneck and create a harvest production line for happiness. Differentiated processes and equipment have contributed to its further sales growth.

Continental Grain Company(Chenghai, Yangjiang), Gaozhou Nongshun Feed Company(Maoming), Yongzhou Huikang science & technology company...



■ The Fourth Generation Maturing Feed Processing Technology

- Eliminate anti-nutrition factors in raw materials, reduce the urease enzyme in soybean meal and no diarrhea, increase survival rate.
- Medium temperature maturing + low temperature granulating process keep the activity of the functional material in raw materials, realize the value of nutritionist formula, make piglet feed taste well like "rice paste". There is no excessive internal heat and pig grows fast after eating it.
- It can be matched special processing technology to ensure the color, fragrance and flavor, to further improve the feed intake of weaning pigs.
- Increase piglet feed intake, the total amount of feeding reaches 525-700g, to improve the absorb ability of piglet's digestive tract. Usually, piglet can increase their weight with 1kg and pig can increase 10kg.

Comparison of differentiated value of ZhengChang maturing technology



Physical property indicators of finished product particles by different processing technologies

Particle indicators	Primary granulating processing technology	Extruded low-temperature granulating	Maturing processing technology	Secondary granulating
Hardness value	14.24±0.60 ^a	18.92±0.59 ^b	19.70±1.05 ^b	18.53±0.66 ^b
Particle durability (PDI)	95.87±0.52 ^a	96.18±0.43 ^a	97.19±0.15 ^b	96.32±0.25 ^a
Protein solubility	67.96±1.26	67.88±1.46	68.85±0.82	68.86±1.77
Starch gelatinization	40.48±4.35 ^a	75.72±2.70 ^b	53.73±2.55 ^a	52.96±4.12 ^c
Particle crispness	4.54±0.41 ^a	5.83±0.72 ^b	6.06±0.63 ^b	4.82±0.27 ^a

Effect comparison of different processing ways

Processing ways	Gelatinization %	Energy consumption kW/h
Crushing	15-18	5-10
Granulating	20-35	7-10
Maturing	40-60	10-12
Extruding	80-100	50-65
UPC processing	60-80	60-87
Steam flaking	60-70	13-20

Digestion tests of nutritional components in finished products by different processing technologies

Particle indicators	Primary granulating processing technology	Extruded low-temperature granulating	Maturing processing technology	Secondary granulating
Dry matter	92.94±0.32 ^{ab}	92.84±0.20 ^a	93.36±0.56 ^b	93.26±0.34 ^{ab}
Crude ash	51.55±2.77 ^a	52.00±1.58 ^a	54.14±3.06 ^a	55.49±3.14 ^b
Total energy	82.72±1.02 ^a	83.18±0.44 ^{ab}	83.80±0.87 ^{ab}	83.55±0.81 ^{ab}
Organic compound	85.46±0.71	85.32±0.62	86.21±0.93	85.97±0.82
Crude protein	79.16±1.64 ^a	79.99±1.87 ^{ab}	81.91±1.41 ^{bc}	82.28±1.57 ^c



Piglet Feed Expander



SPZL 250 piglet feed expander

Full nutrition“rice paste” Reduce cost, keep nutrition, grow fast

Advanced processing technology

Medium temperature maturing + low temperature granulating process keep the activity of exogenous substances, realize the value of nutritionist formula. Eliminate anti-nutrition factors in raw materials, reduce the urease enzyme, and no diarrhea.

High-quality feed

Used for producing 7-21 days high-grade piglet feed.

Keep nutrition, no excessive internal heat and easily absorbed.

Full nutrition, soft, and whey powder is not bonded. Pig likes to eat.

Low energy consumption

Energy consumption per ton is 1/3 of common extruder.

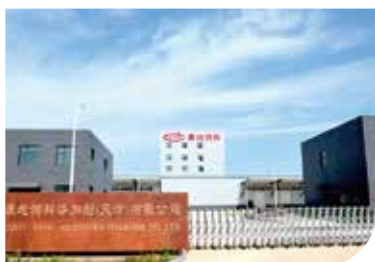
Output: 1 SPZL250 piglet expander (110kW) = 3 common extruders (110kW)

Type	SPZL 180a	SPZL 250	SPZL 338
Main power(kW)	75/90	110/132	160/200/220
Production capacity(t/h)	4-6/6-8	7-9/8-10	2-14/14-18/18-20



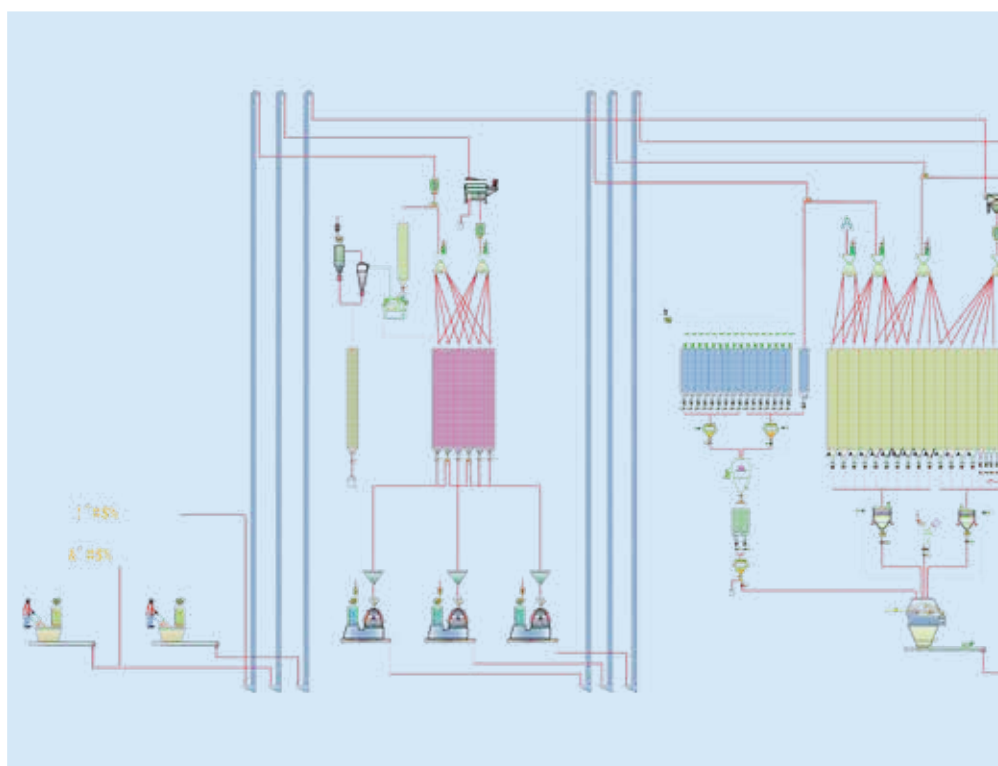
Pig Feed Processing Technology

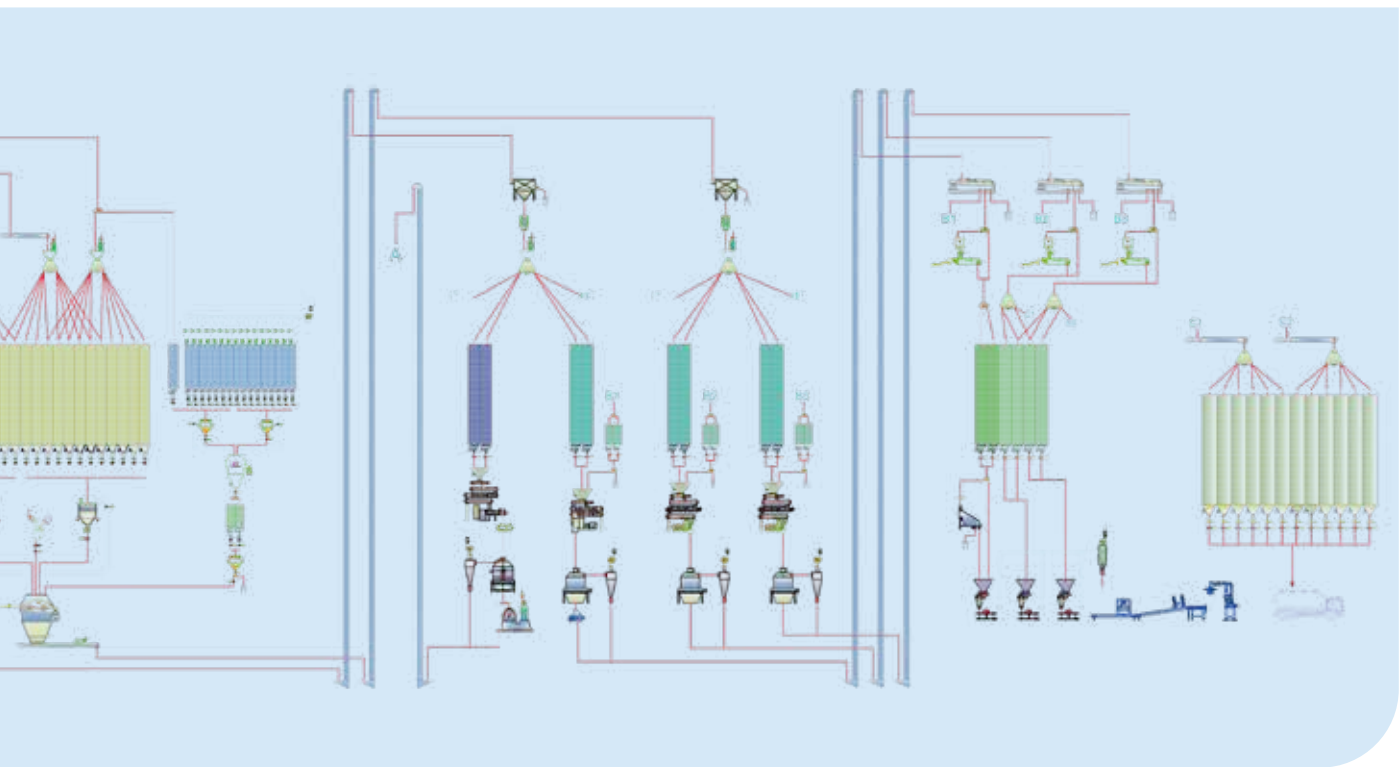
(Provide corresponding equipment according to customer needs)



ZhengChang maturing pig feed production line

- 10-20t/h piglet feed production line
- 10-80t/h middle and large pig feed production line





Laying Hens Feed Processing Technology

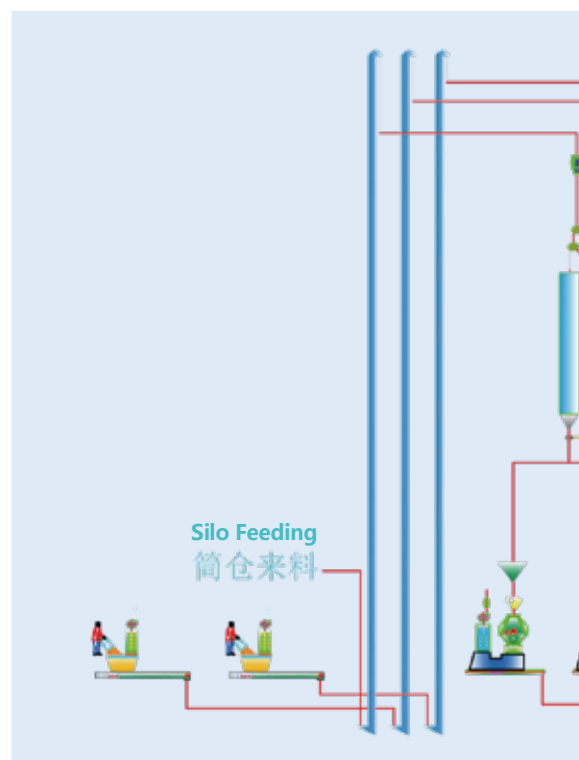
(Provide corresponding equipment according to customer needs)

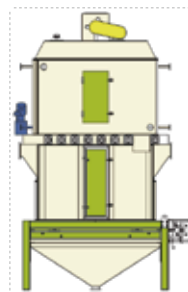
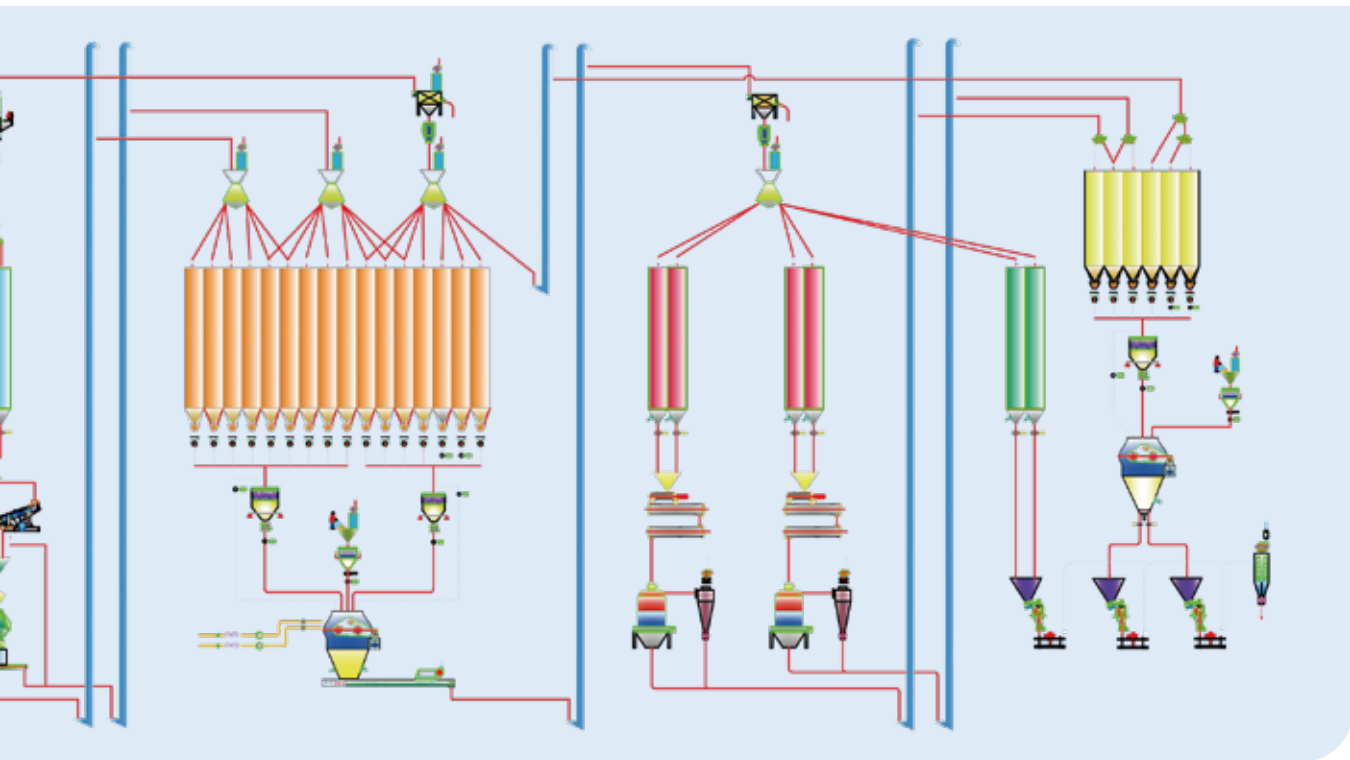


- After high-temperature steam treating, the powder feed may achieve starch gelatinization and protein organized, to ensure Salmonella and other pathogenic bacteria are totally killed.
- It is beneficial to improve the conversion rate of laying hen feed and the laying rate.
- Use the processing technology of high temperature, high humidity, conditioning and maturing (temperature 110°C, 360s, STZG930, 10t/h) + drying and cooling, to ensure feed quality.
- Equipped with liquid adding system to improve nutrition and quality of laying hen feed.

ZhengChang laying hen feed production line

- 10-45t/h laying hen feed production line





Aquatic Feed Engineering

- ZhengChang provides the aquatic engineering, high-quality aquatic feed processing equipment and technology for well-known enterprises at home and abroad.
- 11 feed production lines for Fuzhou Haima, China's largest special aquatic feed plant (3 high-grade shrimp feed production lines, 5 extruded feed production lines, 2 turtle and eel feed production lines, 1 tilapia feed production line).
- Bufeng (Beihai) large-scale aquatic feed turnkey project includes 4 high-grade shrimp feed production lines and 1 extruded feed production line.
- Hubei Xiangda 10t/h aquatic feed + 10t/h aquatic extruded feed. Tianjin Modern Tianjiao 2 fish feed production lines + 2 shrimp feed production lines + 2 extruded feed production lines.
- Nanjing Qingshan: two 120 extruded pet food production lines. Hebei Huanbo: one 168 extruded pet food production line. Shenzhen Gonglin: two 120 extruded pet food production lines.
- Vietnam Yuemei: high-grade extruded shrimp feed; Vietnam Yuebi aquatic feed: 2 660X high-grade shrimp feed production lines; Vietnam Hean: high-grade extruded shrimp feed; Jinche Stock: 2 high-grade extruded shrimp feed production lines; Philippine JULU: 5 t/h extruded feed production line; Mexico: 6 t/h shrimp feed granulating line; Malaysia FISHANCE: 5 t/h fish feed production line; Korea, Bangladesh, Ecuador, Tanzania...





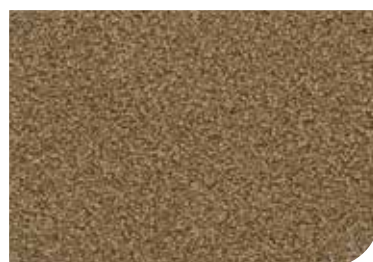
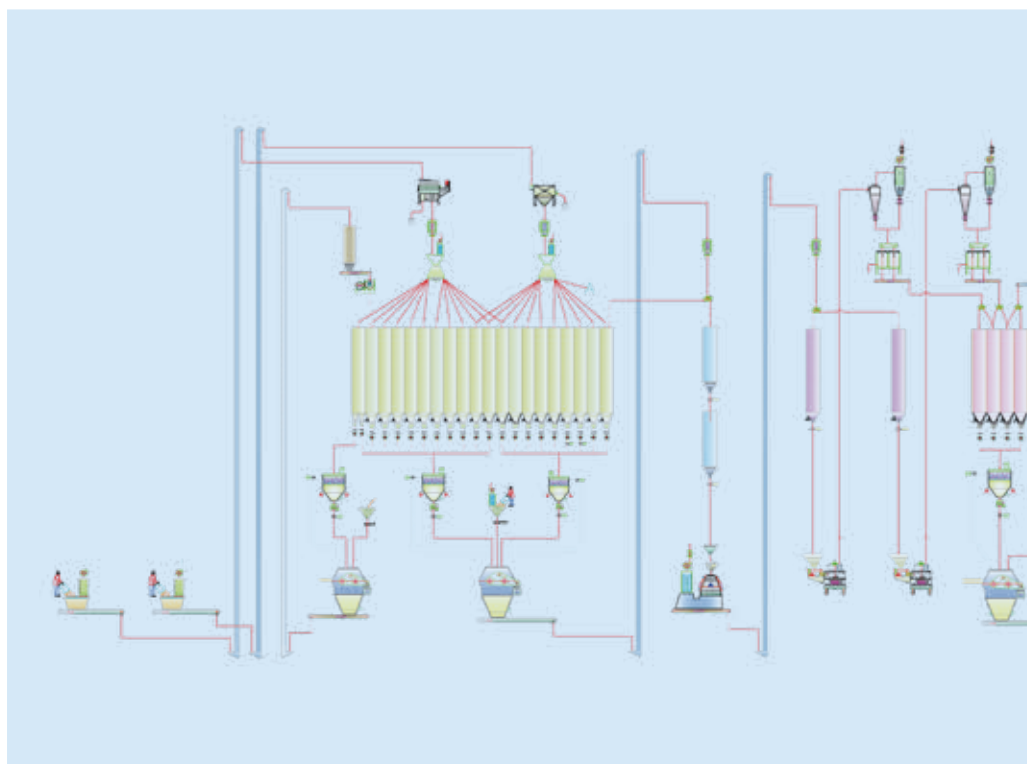
Shrimp Feed Processing Technology

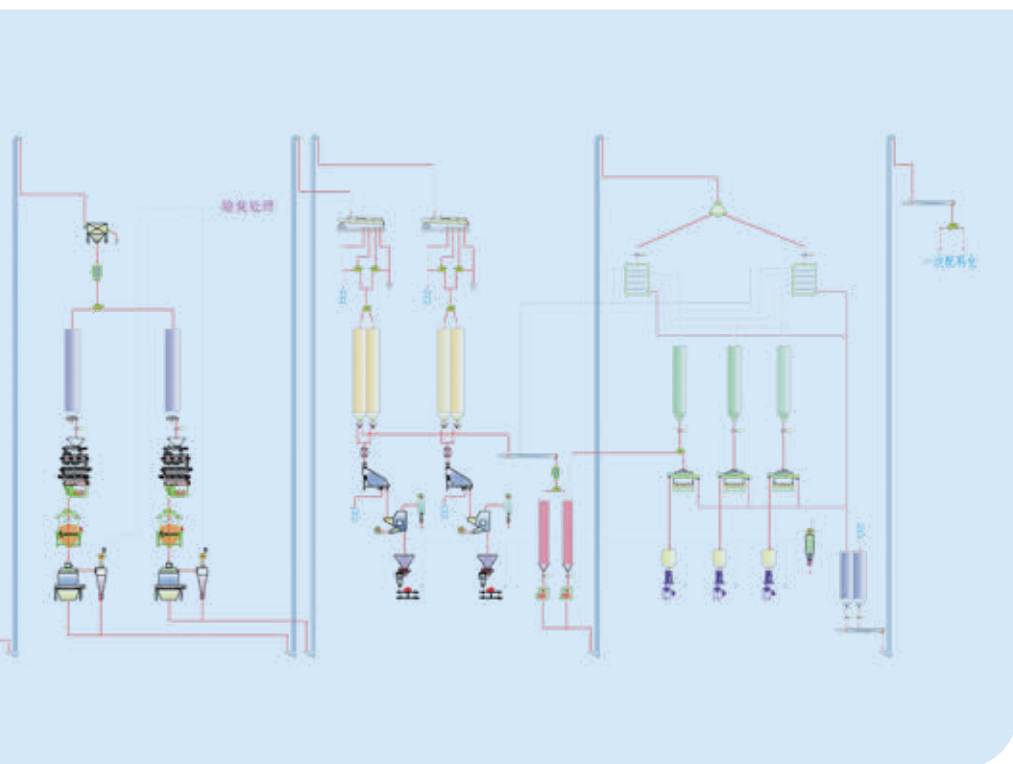
(Provide corresponding equipment according to customer needs)



ZhengChang shrimp feed production line

- 2-18t/h prawn feed production line
- 2-18t/h crab feed production line
- 2-18t/h turtle feed production line





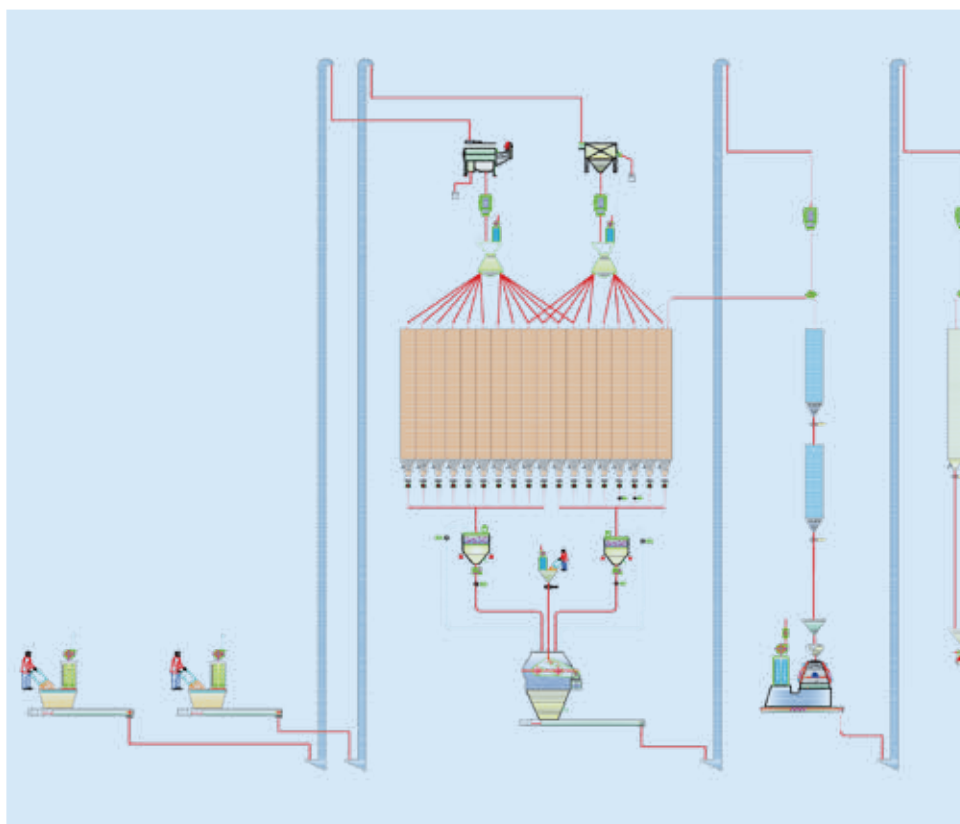
Extrusion Processing Technology

(Provide corresponding equipment according to customer needs)



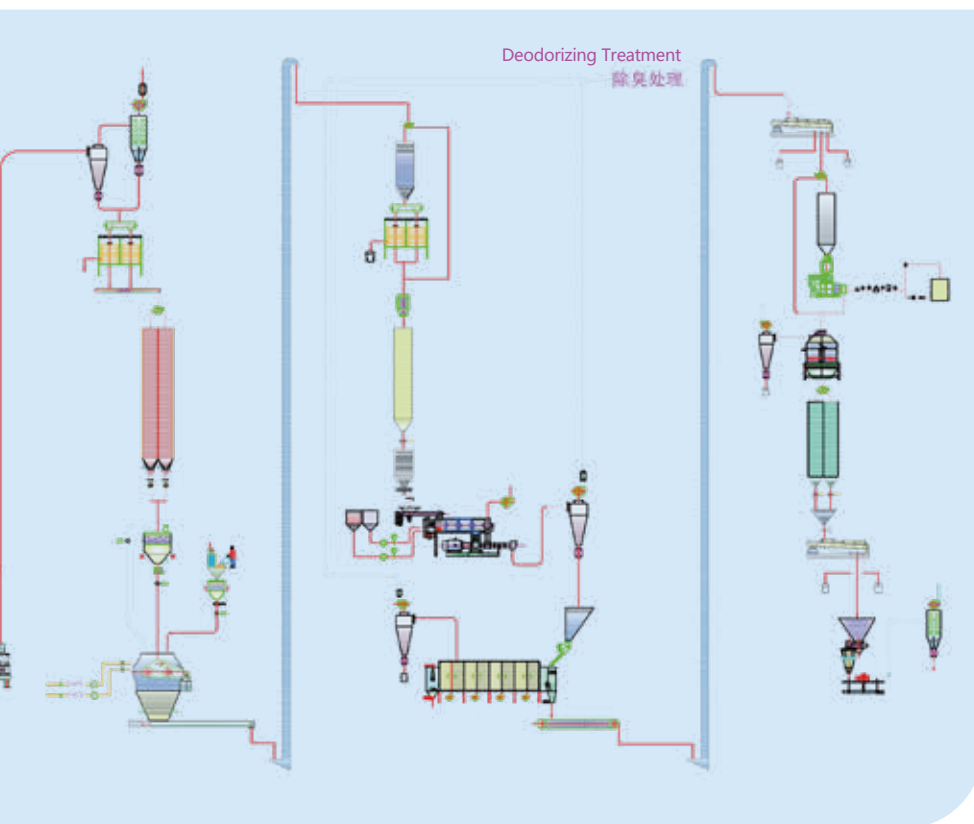
ZhengChang extruded feed production line

- 2-20t/h extruded fish feed production line
- 2-20t/h ornamental fish feed production line
- 2-20t/h pet food production line





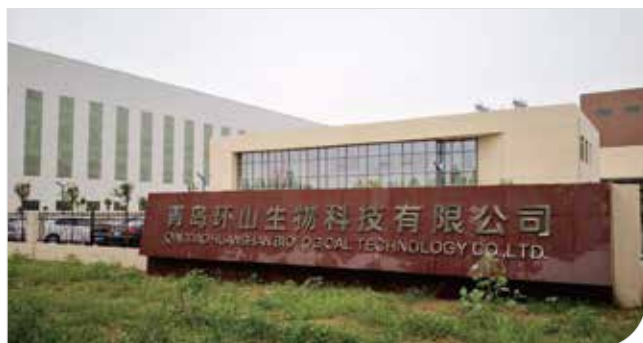
or



Premix Engineering

- ZhengChang has a strong team of premix professionals engaged in premix engineering process development and design, and has successfully built a number of premix and biomass projects with stable operation.
- Reasonable engineering area, environmental, without cross-contamination, safe and clean, strict protection of workshop environment and good preventive measures.
- The stability and reliability of projects are fully guaranteed, high batching accuracy, high mixing uniformity, and low residue rate.





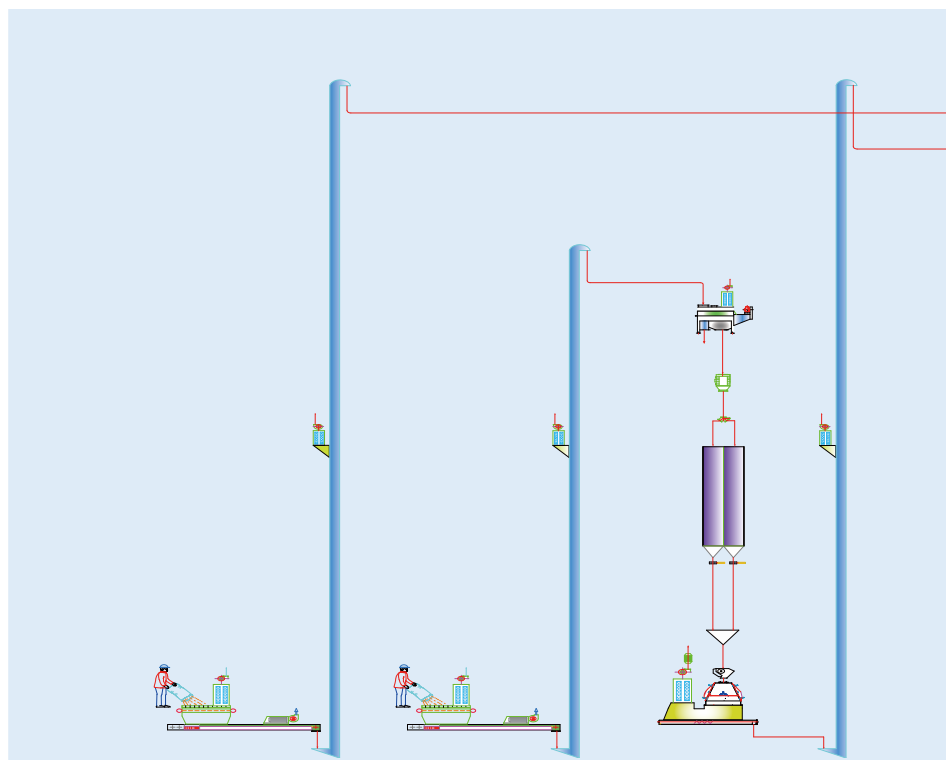
Premix Processing Technology

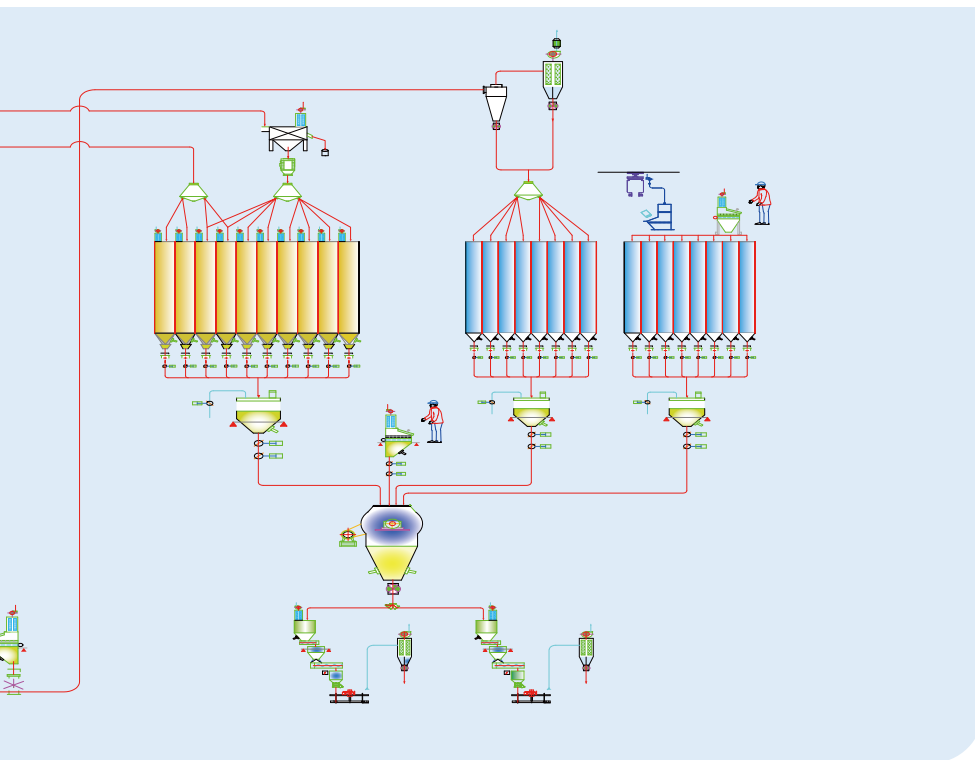
(Provide corresponding equipment according to customer needs)



ZhengChang premix production line

- High-grade premix production line
- Composite mineral additives production line
- Multivitamin additives production line





Cattle and Sheep Feed Engineering

- Henan Puyang Huiyuan, peanut seedlings TMR(Total Mixed Rations) sheep feed production line with an annual output of 50,000 tons.
- Qinghai Gonghe, 5t/h oat straw particle and TMR production line.
- Xinjiang Abati, corn straw TMR production line with an annual output of 30,000 tons.
- Inner Mongolia Aohan, 5t/h millet straw TMR production line.
- Xinjiang Jiangnan Animal Husbandry, pasture straw TMR production line with an annual production of 100,000 tons...



- Patented process design of complete formula cattle and sheep feed, and equipped with patented cattle and sheep feed pellet mill.
- The addition of grass meal and molasses is 40-60% and 5-12% respectively, which can fully meet the ruminant needs of cattle and sheep and make them grow fast.
- The output of the same power type is increased by 40-50% when the grass meal, molasses and fine fodder are fully mixed and extruded.
- To customize different processing technologies according to different raw material formula, to further realize differentiated value of the rate of return.



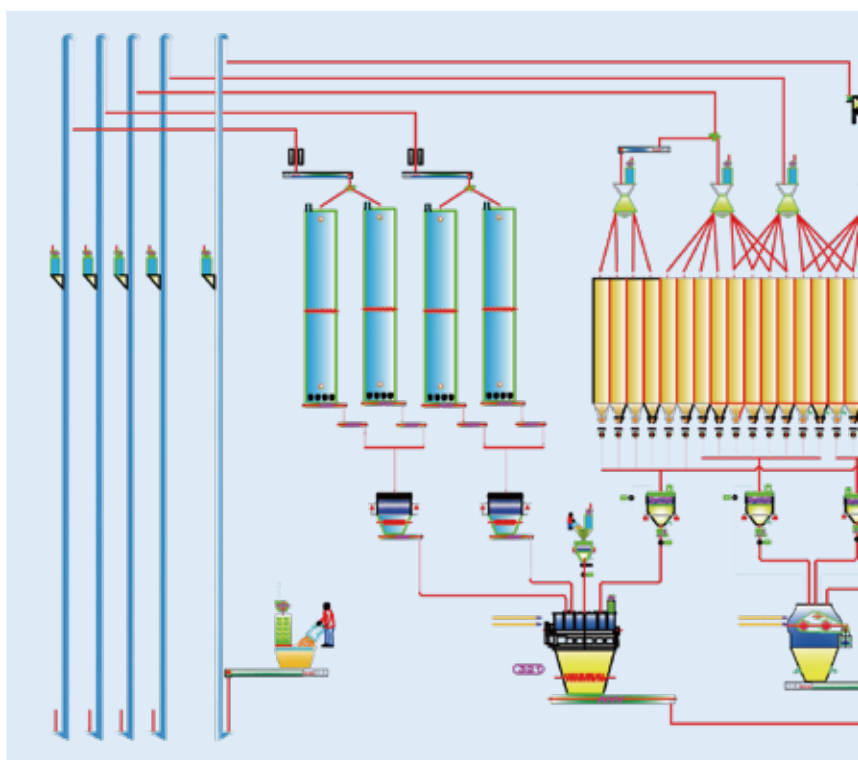
Cattle and Sheep Feed Processing Technology

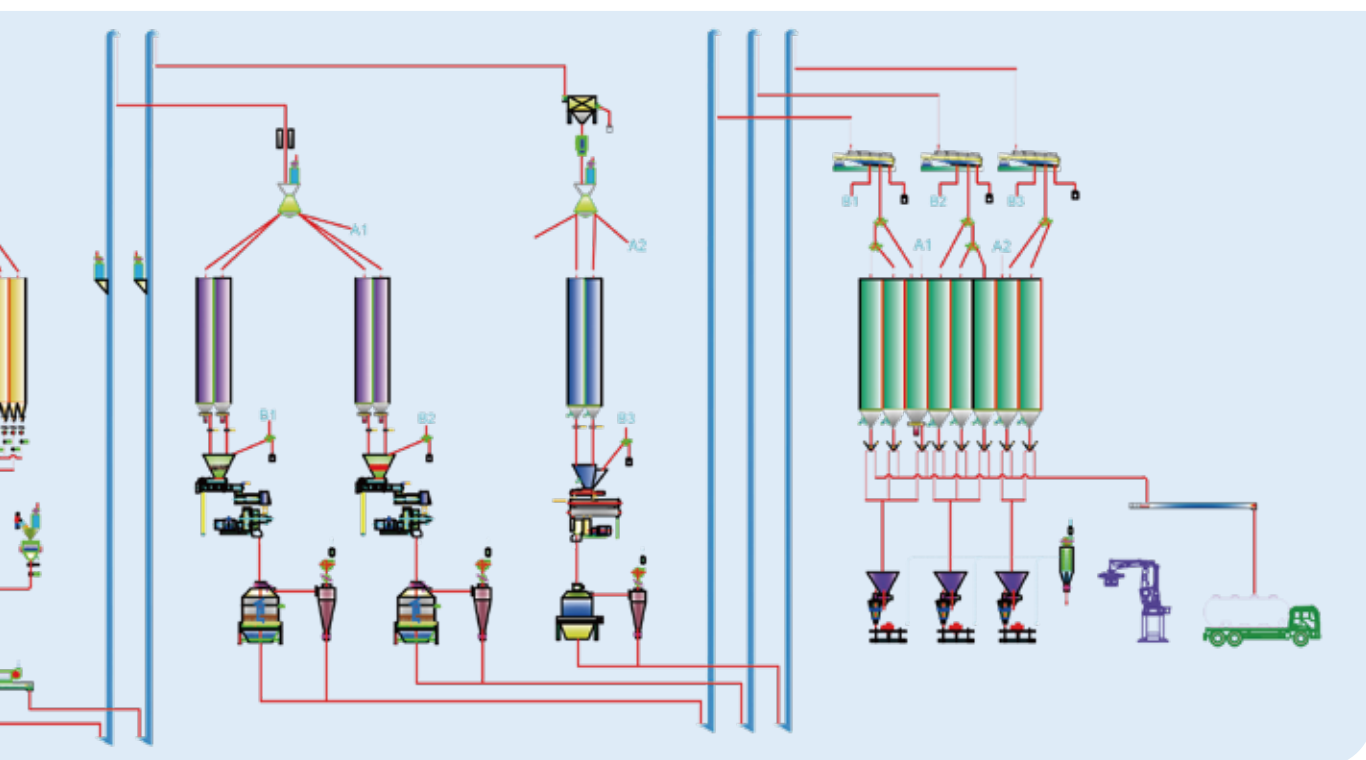
(Provide corresponding equipment according to customer needs)



ZhengChang cattle and sheep feed production line

- 10-40t/h ruminant feed production line





Pasture Engineering

■ All kinds of pasture, straw, bagasse, etc. are pressed into pieces by ZhengChang processing technology and effectively sterilized. Add beneficial bacteria and ferment them, we can make high-quality beef cattle feed, which is sold to developed countries and regions such as Japan and Korea.

■ ZhengChang's complete set of pasture block and granulating unit has been successfully applied to more than 20 China's grass and livestock processing enterprises in Xinjiang, Jilin, Liaoning, Hebei, Beijing, Tianjin, Gansu, Ningxia and Inner Mongolia.

Daye Caoye, a famous pasture processing enterprise in China, has cooperated with ZhengChang in four pasture projects within two years, including several pasture block and granulating production lines.

Xinjiang Hami Balikun Jiankun, was upgraded by ZhengChang, with crushing output and granulating capacity increased by 30% respectively. The workshop has no dust, no blockage and no fault, creating a clean and efficient working environment.

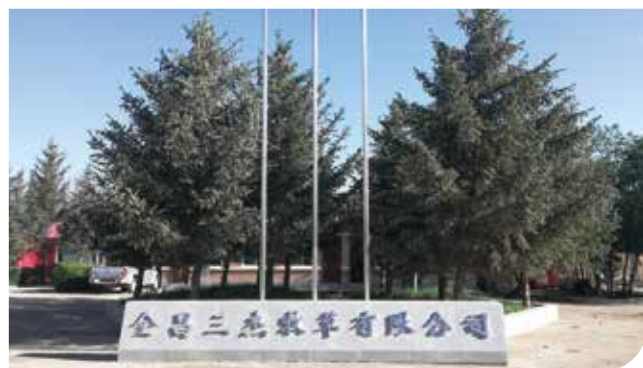
Beijing Sanjylvneng - corn straw granulating production line with an output of 8t/h.

Qinghai Guinancaoye - 2.4t/h Elymus dahuricus granulating line + 2.5t/h Elymus dahuricus block line.

Jinchang Sanjie Pasture - 3t/h alfalfa granulating line.

Inner Mongolia Jinshawan Pasture - 2t/h alfalfa granulating line.





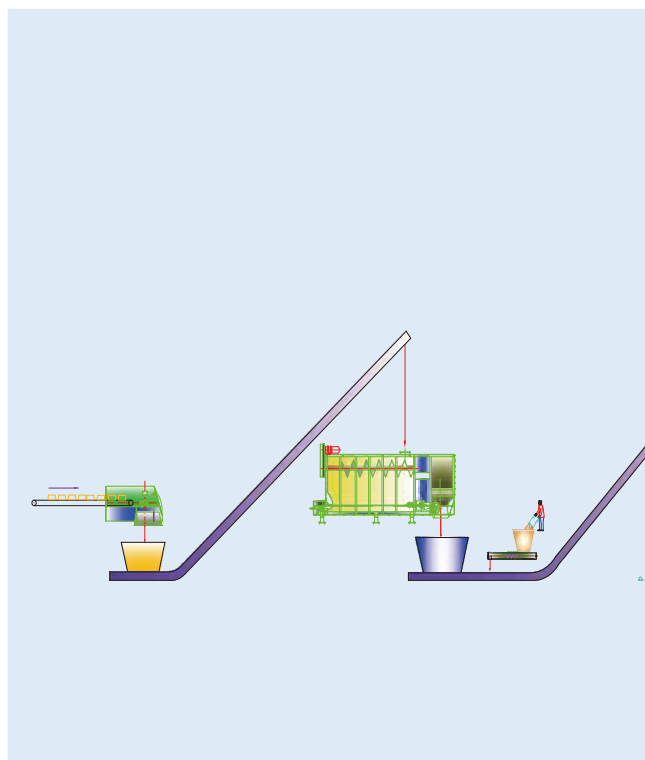
Pasture Processing Technology

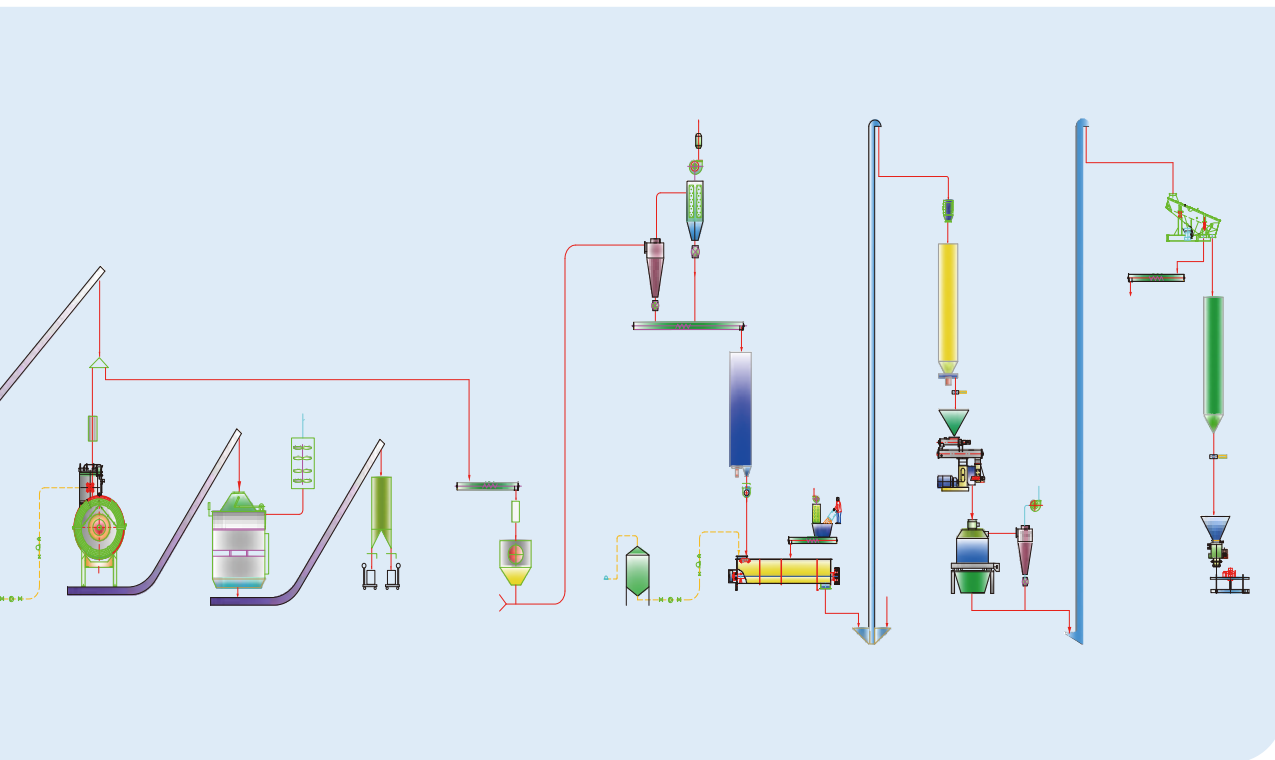
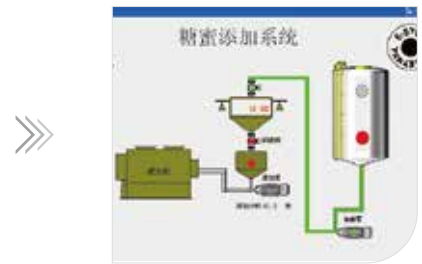
(Provide corresponding equipment according to customer needs)



ZhengChang pasture block production line

- 10-20t/h alfalfa production line
- 10-20t/h straw block production line
- 10-20t/h straw granulating production line





Biomass Energy Engineering

- ZhengChang wood pelleting team has been devoted to the research and manufacture of biomass briquettes engineering for more than 30 years, successively constructed more than 100 biomass projects such as Russia 3t/h, Vietnam, Brazil 16t/h and Shenyang 10t/h straw pelleting project, etc.
- ZhengChang has biomass straw pelleting and briquette machines like straw and wood pellet mill, straw briquette machine, fine and coarse hammer mill, etc., in which the pelleting and briquette machines mainly use direct gear drive mode, with high transformation efficiency, high output and good stability; Straw pellet mill is specially designed for pressing various straws, with a compulsory feeding mechanism to ensure uniform and reliable feeding.
- ZhengChang presided over a key science and technology support project of the 11th Five-Year Plan of the Ministry of Science and Technology: biomass briquettes processing and key equipment research and development, and successfully developed a straw briquette processing unit, which provided a new processing equipment for storing clean renewable energy fuels in China. This will help countryside make wheat straw, rice straw, rapeseed straw, corn straw, sorghum straw, cotton straw, mulberry bars, etc. profitable. Through the development and utilization of renewable energy such as straw pelleting and briquettes, a large number of fossil energy resources can be saved and replaced, and pollution can be reduced. It is not only suitable for the use of particles in power generation of thermal power plants and combustion of industrial boilers, but also has a large profit margin supported by relevant national policies.



ZhengChang Brazil 16t/h wood pelleting production line

A wood pelleting project with China's largest export scale, the most complete processing section and the highest degree of automation.



Russia 3 t/h wood pelleting production line





Large-scale Storage Engineering

Since the construction of China's first steel silo in 1985, ZhengChang Grain Engineering has been pursuing the project quality even each bolt. Grain Engineering steel silo is the quality guarantee for safety and stability.



Safety is never a slogan, because we always interpret it with practical action.



Spiral silos



Assembly silos



Anhui Kingsino



Huanggang New Hope



Henan Shuanghui



Guiyang CP



Nantong ABNA



China Animal Husbandry

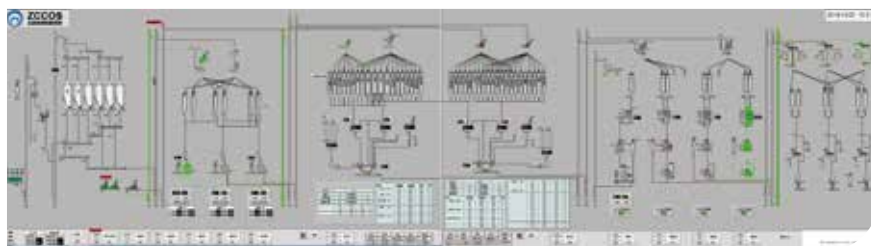
Automation Control System

ZhengChang provides process control systems for many industries such as cereal oil, petrochemical, building materials, metallurgy, port, waste disposal, pasture, etc., and provides complete automation solutions to users, successively built more than 1000 electrical control projects at home and abroad.

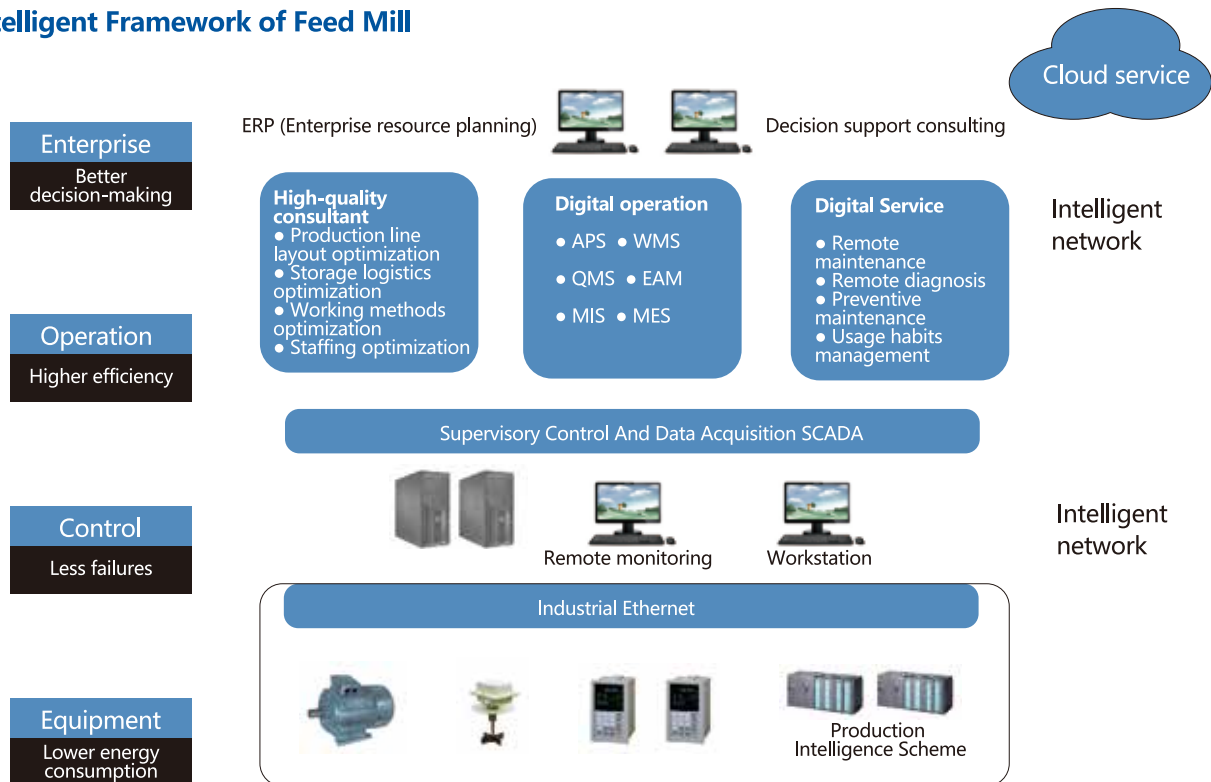


Major service areas

- Feed mill central automation control system
- Feed mill computer screen control system
- Feed mill equipment automatic control system
- Central automation control system for rice mill, oil mill and flour mill
- Automatic control system for pasture processing
- Central automation control system for waste disposal
- Central automation control system for building materials and cement production
- Central automation control system for ports and storage
- Automation control system for chemical and compound fertilizer production
- Central automation control system for metallurgy and steel plant
- Automation control system for power plant
- Other industrial automation control systems



Intelligent Framework of Feed Mill



Raw material feeding

- Ensure correct feeding.
- Display the weight of material in the bin.
- Automatic startup and shutdown, save energy.
- Docking with the data of raw materials storage.

Feed additive feeding

- Make sure the additives are correct and the weight is consistent.
- Bar code error correction.
- Microelement scale reduces labor and ensures correctness.

Feeding from bin top

- Make sure correct distributor feeding.
- The correctness of additive feeding from bin top.
- Metrological function.

Traceability function

- Material name traceability can ensure the correctness.
- Material weight traceability can ensure the link of material data.

Storage capacity retrieval

- Dynamic display of material weight in the bin to realize material controllability.

Batching mixing

- The quality of batching process can be controlled and the efficiency can be improved.
- Automatic scheduling and material requirement planning reminding.

Equipment automatic control

- Increase production capacity, optimize the efficiency and reduce the cost.

Check and verify function

- Ensure the correctness of data and materials, and the whole process can be checked several times.

Task order

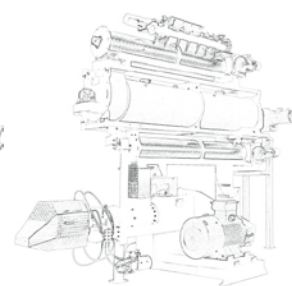
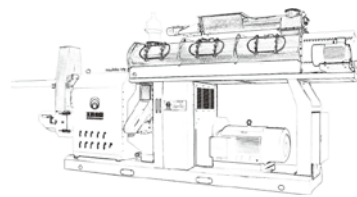
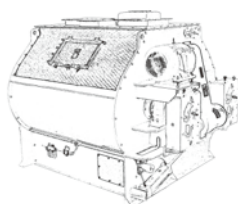
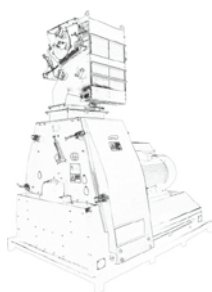
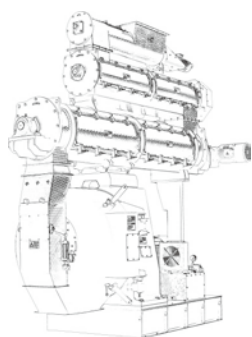
- Connecting with ERP system data, to realize the whole process linking of data and order task production.

Power management

- Optimize the use of electricity to reduce energy consumption.

Dust explosion-proof

- Test of equipment safety.
- Dust test in dangerous areas.





High-efficiency Equipment

High Output, Low Consumption, Safe and Intelligent

■ Technology Innovation	63
■ Livestock and Poultry Feed Pellet Mill	64
Shrimp Feed Pellet Mill	69
Pig Feed Pellet Mill	70
Wood Pellet Mill	71
■ Conditioner	72
■ Hammer Mill	73
■ Feeder	78
■ Vertical Micro-pulverizer	79
■ Double-shaft Mixer	81
■ Single-shaft/Ribbon-spiral Mixer	84
■ Single-screw Aquatic Feed Extruder	85
■ Double-screw Aquatic Feed Extruder	87
■ Raw Material Extruder	88

Technology innovation is the fundamental guarantee for the sustained and rapid development of enterprises

1. In 1973, ZhengChang successfully developed China's first pellet presser(Type45) for cereal oil squeezing. In the early 1980s, a scientific and technological research team led by the first generation of scientific and technical personnel successfully developed China's first KYW-32 pellet mill, and took the lead in mastering the technology of feed production with an output of more than 5t/h in China, pioneering the domestic feed machinery industry.
2. From the successful development of the first domestic pellet mill to 1208 pellet mill with the largest capacity in China (75t/h), from the first pellet feed complete set of project (crushing and pelleting) in 1977 to the establishment of the first provincial technical center in feed machinery industry, ZhengChang has been following the world advanced trend in new high-tech field of feed industry, introducing the international advanced technology from the United States, Germany, France and so on, successfully developing high-grade feed machinery products with world advanced level.
3. On June 10, 2002, Jiangsu ZhengChang Group merged the partial technology and equipment of the mould parts of CPM factory in China with the original Liyang ZhengChang Feed Machinery Parts Company, after the all-stock acquisition of CPM granulating factory in China invested by Ingersoll Rand in 1998, established a service-oriented enterprise Liyang ZhengChang Pellet Mill Mould Technology Company, specializing in the research and development of mould like ring die and roller. In October of the same year, the company successfully restructured, embarking on a brilliant road of rapid development. ZhengChang Mould Company has increased its total assets by 5 times. Its processing capacity and quality rank among the top in Asian industry, and its international market has developed rapidly.
4. In 2008, ZhengChang provided engineering services for TYSON, and the quality of feed produced fully met the requirements of TYSON.
5. Inner Mongolia Saifeiya Company uses ZhengChang double 420 production line, three years of full-load, no shutdown, trouble-free operation.
6. In 2015, the application of ZhengChang 3D digital design platform, standardized production of prefabricated parts, installation of specialized management and other new technologies on the project site, made the development of feed enterprises more rapid, efficient and intelligent.



Livestock and Poultry Feed Pellet Mill

ZhengChang pellet mills have been sold over 9000 units, 65% of Chinese animal feed manufacturers and 6800 global feed companies are using ZHENG CHANG equipment now with efficiency increased by 15%.

ZhengChang has been focusing on pellet mill for 50 years. It performed all-stock acquisition of the granulating factory in China invested by CPM in 1998. Higher quality and efficiency.



50 years of focus and professional

- ZhengChang has been focusing on pellet mill for 50 years.
- 65% of Chinese animal feed manufacturers and 6800 global feed companies are using ZHENG CHANG equipment now.

Quality improving

- On the basis of the acquisition of the granulating factory in China invested by CPM, ZhengChang equipment has made greater breakthroughs not only in appearance but also in functional quality, material quality, heat treatment and service life of wearing parts, and the maturation is more reliable.

Stable and reliable

- Domestic and foreign companies which are using Zhengchang double 420 production lines can reach more than 26,000 hours of trouble-free operation in 3 years, uninterrupted and efficient operation, creating continuous profits.

Output increasing

- Pellet mill is upgraded but without price increasing, breakthroughs in production, better quality, higher cost performance.

ZhengChang Pellet Mill Series (Part):



Livestock and Poultry Feed Pellet Mill



SZLH 1208 Livestock and Poultry Feed Pellet Mill



The largest output pellet mill in China, passed the state-level test

- Production up to 55-75t/h, main power 500/560/630kw.
- Bearing temperature measuring device can monitor the temperature of key bearing in real time, and can judge the early failure of the bearing by temperature, so as to ensure the safe and efficient operation of the equipment.
- Oil cooling lubricating system can circularly cool the oil temperature and the key bearing of the machine.
- Automatic oil lubrication system can be used to add oil on a regular basis, reducing the workload of operators and make the equipment more reliable.
- The electric ring die lifting device improves the assembly efficiency of the ring die and roller, and reduces the labor intensity.
- The electric cutting adjusting mechanism improves the accuracy of clearance adjustment by operation screen.

Livestock and Poultry Feed Pellet Mill



- Design according to the usages of Chinese enterprises. Workers can quickly adapt and it is easy to operate.
- The operation program can be stored according to different formulas.
- Automatic warning and alarm for equipment maintenance, convenient equipment management.

SZLH 1068 Livestock and Poultry Feed Pellet Mill



- Production up to 45-55t/h, promote the feed industry to intensive and large-scale development.
- Automatic adjusting system can realize gap adjustment without stop-working, improve production efficiency.
- Main driving system uses temperature monitoring system to guarantee the equipment running safely.
- Oil circulation cooling system improves cooling and lubricating effect of the driving system to make sure the equipment works stably in a long time.
- The whole equipment realizes automatic control of water, steam, electricity and temperature.

Type	Main power (kW)	Production capacity (t/h)	Feeder power (kW)	Conditioner power (kW)	Die diameter (mm)	Pellet size (mm)
SZLH 968	355/400	35-50	4	15+22	968	Φ2-Φ12
SZLH 1068	355/400/450	45-55	4	15+22	1068	Φ2-Φ12
SZLH 1208	500/560/630	55-75	4	22+37	1208	Φ2-Φ12

■ Livestock and Poultry Feed Pellet Mill



SZLH 428 Livestock and Poultry Feed Pellet Mill



SZLH 350 Livestock and Poultry Feed Pellet Mill



SZLH 400D Livestock and Poultry Feed Pellet Mill



SZLH 420D Livestock and Poultry Feed Pellet Mill



High-precision gear driving structure, imported SKF or NSK bearing, the efficiency is increased by over 15%.



Optional roller gap automatic adjusting system can realize gap adjustment without stop-working.



Enhanced conditioner uses multi-point steam admission, which can make the material fully contact with the steam, ensuring better conditioning effect.



The cutter system is improved with longer service life, to make the feed incision smooth and uniform.

Chinese Feed Enterprises “Gold” Model

The output of model 420 after being upgraded is increased by 20% from 12 tons to 15 tons, and the energy consumption is decreased by 15%. After the acquisition of CPM granulating factory in China, the pellet mill has higher quality and cost performance. It is upgraded but without price increasing.

Upgraded model 428 pellet mill, improve the efficiency

- Replacing one pellet mill can increase the output of the original 420 production line by 15%. (The output is up to 13t at 110kW for chicken feed.)
- Transmission efficiency is up to 97%, reducing the power consumption.

Complete ancillary equipment

- Optional feed quality optimization system, real-time online control the feed moisture.
- Optional door cover spraying system, add various nutritive elements.
- Optional ring die lifting device, safe and time-saving.

Good-quality feed, raise the benefit of breeding

- Multi-point steam admission conditioning, feed is heated rapidly to improve the maturing degree.
- Optimize the angle of blade, prolong the maturing time, mix fully, and high return on feed.
- Use gear-type main driving, the transmission efficiency is higher.

Humanized and automatic operation

- Equipped with automatic control system: steam control, frequency conversion feeding.
- Automatic oil lubricating system makes oil adding easier.

Type	SZLH 200	SZLH 25	SZLH 30	KYW 32a	SZLH 350	SZLH 350D	SZLH 400D
Main power(kW)	5.5	15	22/30	37	55	55	75/90
Production capacity(t/h)	0.05-0.25	0.5-1.5	1-4	3-5	3-7	4-8	5-12
Feeder power(kW)	0.25	0.75	0.75	1.1	1.1	1.1	1.5
Conditioner power(kW)	1.5	2.2	2.2	3	3	3	5.5
Die diameter(mm)	200	250	300	320	350	320	400
Pellet size(mm)	Φ2-Φ12	Φ2-Φ12	Φ2-Φ12	Φ2-Φ12	Φ2-Φ12	Φ2-Φ12	Φ2-Φ12

Type	SZLH 420D	SZLH 428	SZLH 508H	SZLH 558E	SZLH 678D	SZLH 768	SZLH 858
Main power(kW)	110	110/132	132/160	185/200	220/250	250/280	315/355
Production capacity(t/h)	6-15	8-18	6-20	12-26	15-33	18-35	25-45
Feeder power(kW)	1.5	1.5	1.5	1.5	2.2	2.2	3
Conditioner power(kW)	5.5	11	11	11	15	15	15+22
Die diameter(mm)	420	460	508	572	673	762	858
Pellet size(mm)	Φ2-Φ12	Φ2-Φ12	Φ2-Φ12	Φ2-Φ12	Φ2-Φ12	Φ2-Φ12	Φ2-Φ12

Shrimp Feed Pellet Mill



SZLH 880X Shrimp Feed Pellet Mill



High output and long service time

- Produce both sinking and floating shrimp feed.
- Service time of the die with hole diameter Ø1.8mm is up to 8500t, with continuous production of 2500h and output is over 4.5t.

Advanced structure and smooth operation

- Equipped with pneumatic external discharging structure, realize automatic external discharging when it is blocked or overloading of the main motor current.
- The improved feeding scraper divides material into two pressing areas, ensuring smooth discharging and stable operation.

High-quality shrimp feed

- Double-layer jacket insulation conditioner and double-shaft differential conditioner. Optional hygienic conditioner, better maturing performance.
- The reverse opening structure and improved cutter make the cutting more convenient and improve the quality of feed incision.



Feed produced by ZhengChang shrimp feed pellet mill is uniform and smooth.

Type	SZLH 520X	SZLH 600X	SZLH 660X	SZLH 880X
Main power(kW)	90/110	110/132	132/160	160/180
Production capacity(t/h)	0.8-3	1.5-4	2-5	3-7

Pig Feed Pellet Mill



SZLH 678DW Pig Feed Pellet Mill

High efficiency, high quality

- Equipped with proper speed of ring die according to pig feed.
- Increase the work area of ring die, improve the capacity.

Good-quality feed, raise the benefit of breeding

- Multi-point steam admission conditioning, feed is heated rapidly to improve the maturing degree.
- Optimize the angle of blade, prolong the maturing time, mix fully, and high return on feed.
- Use gear-type main driving, the transmission efficiency is higher.

Humanized and automatic operation

- Equipped with automatic control system: steam control, frequency conversion feeding.
- Automatic oil lubricating system makes oil adding easier.

Complete ancillary equipment

- Optional feed quality optimization system, real-time online control the feed moisture.
- Optional ring die lifting device, safe and time-saving.

Type	SZLH 420DW	SZLH 678DW
Main power(kW)	110	250
Production capacity(t/h)	8-18	20-36



MZLH 858 Wood Pellet Mill

Stable, safe and reliable

- The main shaft system uses double support structure without shake to offer more extrusion force from ring die.
- Control device of ring die and roller is external to realize gap adjustment without stop-working.
- Rollers use circulating water cooling, realizing lower temperature and longer service time of bearings, and lower oil consumption.
- The bearings of main shaft and roller bearing with temperature measuring device, which can monitor the working state of bearings.
- Key components like main shaft, driving wheels and gears are made of high strength forged alloy steel. Gears are processed by high precision gear grinding machine.
- Driving system uses imported bearings to ensure the reliability and long service time of the equipment.
- Ring die and roller use high strength forgings, automatic gun-drill drilling and vacuum heat treatment. The ring die service time > 500 hours.

Higher efficiency and production

- High gear transmission efficiency, large transmission torque, large roller friction, production is increased by 15%.
- Mandatory feeding assures uniformity.
- Design of spiral feeding plate to ensure uniform intake of wood pellets and balanced extruding stress.

High automation and applicability

- Easily operated control cabinets. Pellet mill automatic control system is connected to central control room.
- Pellet mill has intelligent system including working reports, working time, oil temperature alarm and lubricant replacement reminding.
- Pellet mill can be used for wood and straw, which is applicable for all kinds of biomass materials. When producing straw, the pellet mill is equipped with three-roller anti-block screw conveyer.

Type	MZLH 420	MZLH 508	MZLH 768	MZLH 858
Production (t/h)	0.8-1.5	1-2.2	2.5-4	3-4.5
Main power(kW)	90	110/132	250/280	250/280
Pellet diameter (mm)	6-12	6-12	6-12	6-12

Conditioner



STZT Stainless steel conditioner



STZG Double-layer jacket conditioner



STZY Double-shaft differential conditioner

- The material contact part of the conditioner is made of stainless steel.
- The conditioner uses multi-point steam admission to make the material contact fully with the steam.
- The retention time of the material in the conditioner can be controlled by adjusting the angle of the blade, to improve the effect of material conditioning.
- The conditioner is designed with a large door for convenient cleaning and maintenance.

Type	STZG 32	STZG 36	STZG 40	STZG 46	STZG 52
Diameter(mm)	320	360	400	460	520
Power(kW)	3	4	5.5	7.5	15

Type	STZY 40×32	STZY 50×40	STZY 60×45	STZY 68×51
Diameter(mm)	400×320	500×400	600×450	680×510
Power(kW)	7.5	11	18.5	22

Type	STZD 280	STZD 320	STZD 400	STZD 460	STZD 550	STZD 610	STZD 750	STZD 850
Diameter(mm)	280	320	400	460	550	610	750	850
Power(kW)	2.2	3	5.5	11	15	15	22	37



STZG series hygienic conditioner

- The outer layer of the conditioner has a thermal insulation layer, which can be heated by electricity, and the temperature can be set.
- The outer layer of the thermal insulation layer is attached with a foamed silicone rubber, which can reduce the heat loss and keep the material with a higher maturing temperature (70-105°C).
- The conditioning shaft has continuous spiral blade, the discharge outlet is equipped with a uniform material mechanism, and low residue in the barrel, no steam channeling.
- The conditioning shaft is driven by the frequency conversion deceleration motor, and the speed can be adjusted according to the production and the maturing time, so as to realize the long residence time of the material in the barrel.
- The conditioner is designed with a large door for convenient cleaning and maintenance.

Type	STZG 630	STZG 800	STZG 930	STZG 1200
Diameter(mm)	630	800	930	1200
Length(mm)	3660	4000	4000	4500
Power(kW)	5.5	5.5	5.5	7.5
Speed(rpm)	0-12	0-12	0-12	0-13
Output(t/h)	4-18	8-30	10-35	20-45
Maturing time(s)	≥85(15t/h)	≥100(20t/h)	≥125(25t/h)	≥128(35t/h)

Hammer Mill

The production capacity is in the lead in China compared with the same power types. It uses multi-cavity structure with advanced technology, to overcome the problem of material accumulation.

The different types of professional hammer mill, especially for crushing of shrimp, animal protein, alcohol tank, cassava, forage, wood, biomass energy, etc.

ZhengChang, the pioneer of "multi-cavity technology" for grinding equipment.





Won the first national patent in the industry

- The patented design uses high quality alloy hammer, the grinding efficiency is improved 30%, grinding fineness and uniformity are improved by more than 30%, the temperature of crushed materials drops 0.5°C.
- Jiangsu Xinghua Baisuihang Company uses ZhengChang SFSP 138x50F, 200kW, sieve aperture 1.5x3+2.0x1, output 23.7t/h, for crushing corn.

SFSP 138×75F Champion Hammer Mill

High output, low energy consumption

- Grinding capacity of F type upgraded hammer mill is improved 30% than the E type.
- The original E type hammer mill can be upgraded with low cost and high output.
- The feed volume can be adjusted automatically to ensure the full load operation of hammer mill and improve the efficiency.
- It can be equipped with bearing vibration, temperature remote detection system, alarm and stop automatically when out of order.

Advanced structure, stable operation

- The multi-cavity design of the grinding chamber makes the wear of the hammer and screen more uniform and improve the service life of the wearing parts.
- The impurities like stone and metal in the raw material can be removed, feed quality and the service life of wearing parts can be improved.

Type		SFSP 138×38F	SFSP 138×50F	SFSP 138×60F	SFSP 138×75F	SFSP 138×100F
Main power(kW)		90/110/132	132/160	160/200/220	200/220/250	250/280/315
Production capacity(t/h)	Φ3mm	15-30	22-35	27-48	33-55	41-70
	Φ1mm	4.5-8.8	7-11	8.5-15	11-18	13-21

Hammer Mill



SFSP 72F Series Champion Hammer Mill

- Improve the feed quality and fineness. Save electricity bills 100,000 RMB every year.
- The temperature of grinding chamber is lower than the normal one.
- Small vibration, stable running, longer service time.

Type		SFSP 72×30F	SFSP 72×38F	SFSP 72×50F	SFSP 72×60F	SFSP 72×75F	SFSP 72×100F
Main power(kW)		37/45	45/55	55/75	75/90/110	90/110/132	132/160
Production capacity(t/h)	Φ3mm	7-10	9-12	13-16	16-22	19-25	22-35
	Φ1mm	1.8-3.2	2.3-4	2.8-5	3.8-7	4.5-9	6.6-11



SFSP 60E Series Champion Hammer Mill

- Suitable for crushing all kinds of raw materials of pellet feed, such as corn, sorghum, wheat, bean and so on.
- Simple, durable, safe and reliable structure, easy to install and maintain, small vibration and high output.
- Produce coarse and fine feed, suitable for fibrous material, high moisture material, etc.

Type		SFSP 60×30E	SFSP 60×38E	SFSP 60×50E	SFSP 60×60E	SFSP 60×75E	SFSP 60×100E
Main power(kW)		30/37	45/55	55/75	75/90	90/110	110/132
Production capacity(t/h)	Φ3mm	6-8	8-12	13-16	16-22	18-24	22-28



SFSP 112F Series Champion Hammer Mill

- Especially designed to grind the fibrous materials, and raw materials with high moisture and large oil.
- Especially suitable for grinding dried fish, cottonseed meal, corn on the cob, shrimp shell, bean curd, herbal materials and the high moisture content(17~24%) corn.
- The particles are more uniform. Use $\Phi 1.2\text{mm}$ below and large aperture screen to produce thick, medium, thin or super powder materials, higher efficiency and no sticking screen phenomenon.

Type	SFSP 112×30F	SFSP 112×38F	SFSP 112×50F	SFSP 112×60F	SFSP 112×75F	SFSP 112×100F
Main power(kW)	55/75	90/110	110/132/160	160/200	200/220	220/250/280
Production capacity(t/h) $\Phi 3\text{mm}$	10-15	15-20	19-26	28-36	33-50	36-62



SFSP 120×110A Pig Feed Hammer Mill

- Optimum design of equipment core assembly, high-speed operation, higher output, stable and reliable.
- Multi-cavity combination patented structure, more uniform abrasion, lower noise, low cost and longer service life.
- Simple and fast installation of hammer, more convenient replacement and maintenance, save time and labor.
- Use high-quality sensor to control the operation at any time. Safer, more accurate control of finished products.

Type	SFSP 120×50A	SFSP 120×70A	SFSP 120×80A	SFSP 120×110A
Main power(kW)	110/132	160/200	200/220/250	250/280/315
Production capacity(t/h) $\Phi 2\text{mm}$	13~20	20~30	25~36	33~50



SFSP 56×40a Hammer Mill

- Host machine uses direct drive with automatic and uniform feeding mechanism, feeding amount can achieve automatic control.
- The main component rotor, can realize bi-directional rotation through the high precision dynamic balancing test.
- The hammer after special heat treatment has good quality, high grinding rate. The operation door is equipped with self-locking device, flexible and convenient, safe and reliable.

Type	SFSP 56×36a	SFSP 56×40a
Main power(kW)	22/30	30/37
Production capacity(t/h) Φ3mm	3-4/4-6	4-6/6-7



SFSP 66×100E II Hammer Mill

- Suitable for the grinding of livestock, poultry and aquatic feed, and realizes the conversion of coarse and fine grinding by adjusting the clearance between hammer and screen.
- Effectively reduce vibration and noise, control the noise below 100 decibels.
- Equipped with a secondary grinding chamber, the output and fineness are increased by more than 25% compared with the ordinary hammer mill.
- Rotor assembly optimization, high-speed operation is more stable.
- Reasonable layout of hammers increases the impact frequency of hammers and materials, further improves the crushing fineness.

Type	SFSP66×30E II	SFSP66×38E II	SFSP66×50E II	SFSP66×60E II	SFSP66×75E II	SFSP66×100E II
Main power(kW)	37/45	45/55	55/75	75/90/110	90/110/132	132/160
Production capacity(t/h)	Φ3mm	6.5-8	9-13	14-17	17-23	16-25
	Φ1.5mm	3.8-5.2	4.3-6.4	5.7-8.5	7.3-13	9-15
						13-18.9



SFSP 88×60 Hammer mill

- Used for the grinding of raw materials like organic garbage, drug residue, winery, sugar, etc.
- Used for the grinding of biological fermentation wet materials, like livestock and poultry excrement.
- The water allowable value of organic fertilizer materials reaches 25-55%, and particle size can reach the requirement of pelleting.
- Solve the problem of materials with high moisture, the grinding of organic materials treated by fermentation has better effect.
- High-speed rotating blade makes good grinding fineness, high efficiency and low energy consumption.
- Use high alloy wear-resistant hammer, more wear-resistant than ordinary hammer, and the service life of the hammer is increased.

Type	SFSP 88×40	SFSP 88×60	SFSP 88×80
Main power(kW)	55	75	100
Production capacity(t/h)	4-8	6-10	12-20



F type impeller feeder for removing stone and metal



E type impeller feeder for removing stone and metal

- Automatic removing of stones, sand and metal impurities in raw materials.
- Improve the palatability of feed and prolong the service life of equipment.
- The service life of screen is increased by more than 2.5 times.
- The production time can be saved by 100 minutes per month and the efficiency can be increased by 20%.



Impeller feeder for removing metal



The impurities like stone and metal in the raw material can be removed, feed quality and the service life of the wearing parts can be improved.

Type	SWLY 1	SWLY 2	SWLY 3	SWLY 50D	SWLY 4	SWLY 5	SWLY 100D	SWLY 120
Main power(kW)	1.1	1.1	1.1	1.1	1.1	1.5	1.5	1.5
Production capacity(t/h)	23	32	50	60	70	100	122	140

Type	SWLY 30E	SWLY 38E	SWLY 50E	SWLY 60E	SWLY 75E	SWLY 100E
Main power(kW)	1.1	1.1	1.1	1.1	1.5	1.5
Production capacity(t/h)	32	50	60	70	100	122

Type	SWLY 30F	SWLY 38F	SWLY 50F	SWLY 60F	SWLY 75F	SWLY 100F
Main power(kW)	1.1	1.1	1.5	1.5	1.5	2.2
Production capacity(t/h)	19.7	31.6	35.6	47.5	66.5	78.6

Note: Maximum speed 50r/min

Vertical Micro-pulverizer



SWFL 150D Vertical Micro-pulverizer



Grinding system

No more light substance left such as soybean meal husk after its improvement.



Feeding system

The unique feeding system makes the feeding more uniform, and perfect impurity clearing.



Grading system

Controllable grading speed and granularity of finished products can be controlled according to users' needs.

High quality and output, reach perfect balance between fineness and production.

Once grinding mesh $\leq \Phi 1.8$, oil content $\leq 8\%$, moisture content $\leq 10.5\%$. For grinding fineness, 95% passing through 80 meshes, output 2-9 t/h.

Range of Application

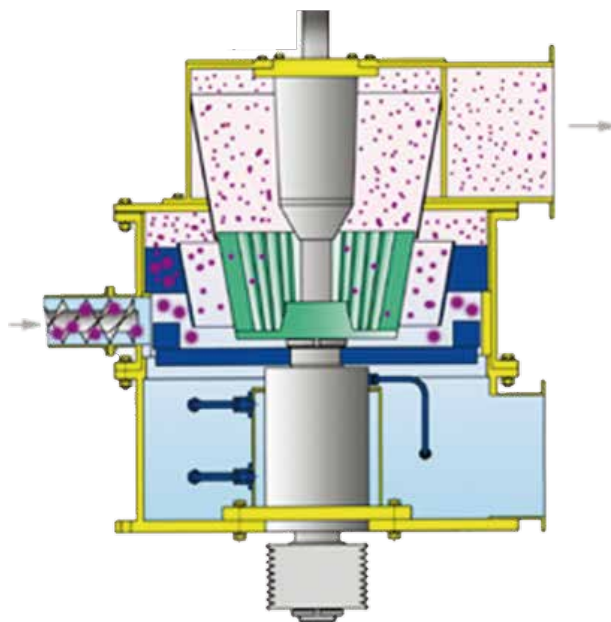
- It is suitable for micro-pulverization of pet food, extruded fish feed, prawn feed, eel feed, turtle feed and raw materials for small animals in large and medium-sized feed factory.

Good fineness, high output

- We can provide customers with 60-120 meshes of grinding fineness, more than 99% sieving rate of the finished products.
- Output is increased more than 15% compared with the domestic similar machine.

Advanced structure, smooth operation

- Compact structure, small covering area, centrifugal air-separator inside.
- High precision grinding system, smooth operation, more uniform fineness and improved 30% of efficiency.
- Gear ring and blade are produced in high standard, with higher grinding ability, longer service life.
- The grading system is optimized to make sieving more uniform, easier to adjust and more flexible.
- The optimized configuration of the wind network system data and the reasonable layout of the process make overall efficiency increased by over 30%.

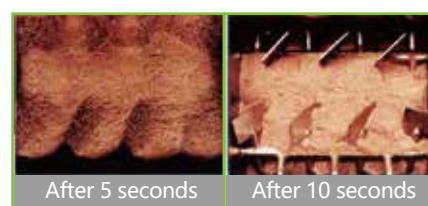
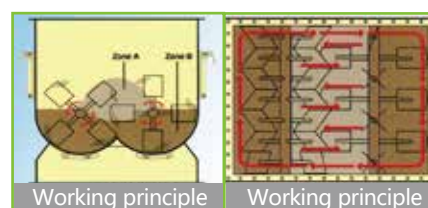


Type	SWFL 102D	SWFL 128D	SWFL 150D
Main power(kW)	75/90	110/132/160	160/200
Production capacity(t/h)	95% passing through 80 meshes		
	2-3/2.5-4	3-5/4-6/4.5-7	4.5-7/5.5-9

Double-shaft Mixer

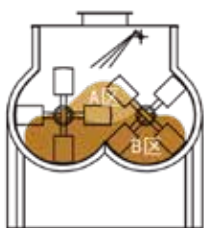
The function and technology of ZhengChang double-shaft mixer have reached the international advanced level which driving more stably. European companies prefer this kind of mixer.

ZHENG CHANG mixer can be used in feed, premix, paint, pharmaceutical, chemical, food additives and other different characteristics, proportion, fineness, high humidity, and strong bonding materials, which lead to high-grade, health and safety of feed.

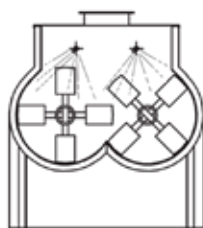




SSHJs series 4m³-10m³ Double-shaft Efficient Mixer



Advanced principles



Injection device can be equipped to reduce the residual



Good effect with adding a variety of liquids



High uniformity, a new generation of ZhengChang technology

$C_v \leq 5\%$, the mixing uniformity can reach 2.3% within 30 seconds, greatly increasing the usage value of mixer.

Advanced structure

- The creative design of the double-shaft mixer with gearbox ensures smooth transmission, variable speed operation, and reduces power consumption.
- The opening shaft and linkage mechanism are improved to ensure that the opening angle is larger than 90 degrees, and the door can be locked.
- The unique design of the air-return system ensures the steady flow of air during the full feeding process.

Various indicators comply with international standards

- Good mixing effect: $C_v = 2.5\%$, the residual $\leq 0.1\%$.
- Fast mixing speed: mixed cycle 30s~120s.
- Many kinds of liquid and solid can be added at the same time. The spraying is accurate and the control is convenient.

Double-shaft Mixer



SSHJd series 0.2m³-10m³ Double-shaft Mixer

Model	Effective volume (m ³)	Mixing amount per batch (kg)	Mixing time per batch (s)	Mixing uniformity (Cv%≤)	Power (kW)	Speed (rpm)
SSHJ 0.2d	0.2	100	30-120	5	3	35
SSHJ 0.5da	0.5	250	30-120	5	7.5	50
SSHJ 1da	1	500	30-120	5	15	50
SSHJ 2da	2	1000	30-120	5	18.5	35
SSHJ 3da	3	1500	30-120	5	22	31
SSHJ 4da	4	2000	30-120	5	30	30
SSHJ 6da	6	3000	30-120	5	37	24
SSHJ 8d	8	4000	30-120	5	45	21
SSHJ 4Sa	4	2000	30-120	5	22	30
SSHJ 6Sb	6	3000	30-120	5	37	24
SSHJ 8s	8	4000	30-120	5	45	21
SSHJ 10s	10	5000	30-120	5	75	18

Single-shaft/Ribbon-spiral Mixer



SDHJ Single-shaft Blade Mixer

- Shaft-mounted type hardened-gear reducer drive with high efficiency and low noise.
- The main shaft ends use real sealing structure.
- Adjustable blade design with long service life and low residue.
- High mixing uniformity ($C_v \leq 2.5\%$), can add a variety of liquids.
- The full-length door structure and door locking structure can stop the leakage of material.

Model	Effective volume (m ³)	Mixing amount per batch (kg)	Mixing time per batch (s)	Mixing uniformity (Cv%≤)	Power (kW)	Speed (rpm)
SDHJ 1b	1	500	60-120	5	11	43
SDHJ 2b	2	1000	60-120	5	18.5	39
SDHJ 3b	3	1500	60-120	5	22	30
SDHJ 4b	4	2000	60-120	5	30	28
SDHJ 6b	6	3000	60-120	5	30×2	28
SDHJ 10b	10	5000	60-120	5	37×2	24
SDHJ 12b	12	6000	60-120	5	45×2	24



SLHY 12 Ribbon-spiral Mixer

- Moderate mixing, high uniformity, no segregation.
- Short mixing cycle, fast discharging, and small residual amount.
- The two-way spiral belt rotor is made of high quality alloy steel, and the rotor is equipped with a ring cleaning device.
- Smooth transmission, low abrasion, convenient maintenance.
- Several atomized nozzles can be equipped for liquid addition.

Model	Effective volume (m ³)	Mixing amount per batch (kg)	Mixing time per batch (min)	Mixing uniformity (Cv%≤)	Power (kW)	Speed (rpm)
SLHY 0.4a	0.4	200	3-6	7	4	35
SLHY 0.6	0.6	300	3-6	7	5.5	34
SLHY 1c	1	500	3-6	7	11	32
SLHY 2.5	2.5	1000	3-6	7	18.5	30
SLHY 5	5	2000	3-6	7	30	28.8
SLHY 7.5	7.5	3000	3-6	7	37	26
SLHY 10	10	4000	3-6	7	45	22
SLHY12	12	5000	3-6	7	75	21

Single-screw Aquatic Feed Extruder



SPHS 268F Aquatic Feed Extruder

Creator of efficient extruder with an output of 20t/h at 400kW

Guarantee the quality of extruded particles

- A new type of conditioner has been equipped to make the final feed maturing degree and uniformity better than the traditional ways.
- Multi-screw coaxial extruding, feed output is increased obviously, abrasion of wearing parts is more uniform, discharging is smoother and particle uniformity is better.
- When producing different particles, the quantity and speed of cutter can be adjusted according to needs, and cutting quality is easier to control.
- The self-adjusting constant gap cutting system ensures the appearance quality of the products, solving the appearance quality problems caused by cutter abrasion.

Good control performance

- The adaptability of different feed formulations is improved compared with the conventional condition in the industry, and the formula sensitivity is low.
- Easy to disassemble and assemble ring die, fast cleaning, save operation time and reduce cross contamination
- Touch screen control system reduces the dependence on the operators' skills.

Stable and reliable

- Use imported bearings, high-precision gear transmission, circular lubrication and cooling system, overload protection system, etc., to make the machine run stably and reliably. Screw, bushing, mould are made of alloy steel with good wear resistance and long service life.
- Use a kind of general-purpose equipment to produce floating feed and sinkable feed according to the demands. The auxiliary bulk density control system can be selected for the production of high bulk density extruded particles.



Conditioner

Type	SPHS 168F	SPHS 218F	SPHS 268F
Main power(kW)	160/200	250/315	400
Production capacity(t/h)	4-7/5-9	7-12/8-15	10-20

Single-screw Aquatic Feed Extruder



SPHS 218F Aquatic Feed Extruder

New generation of technology

- The new type conditioner can soften material fibers, improve gelatinization degree, reduce power consumption and increase production capacity.
- Intelligent control system, key data on-line monitoring, improve efficiency.
- The conditioner can be automatically cleaned to reduce the residual and cross contamination after shutdown.
- For example, 168F extruder, power of 160KW, uses the $\phi 4\text{mm}$ template to produce floating fish feed. The measured output is 7.19t/h, increased by 30%-50% compared with the average level of the same model, and the main power consumption is 20 kWh per ton.

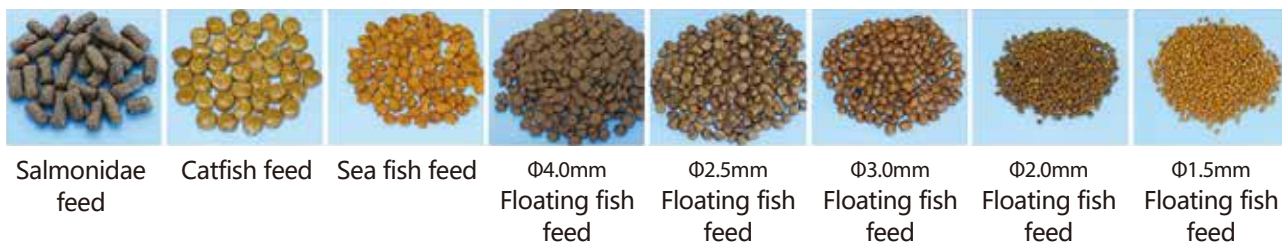
New generation of quality

- The new generation of multi-screw coaxial continuous extrusion makes material mature more uniform and discharge smoother.
- Automatic compensation constant gap cutting technology, more uniform particle cutting, better appearance.



SPHS 168F Aquatic Feed Extruder

Various high-grade extruded aquatic feed



Salmonidae
feed

Catfish feed

Sea fish feed

$\Phi 4.0\text{mm}$
Floating fish
feed

$\Phi 2.5\text{mm}$
Floating fish
feed

$\Phi 3.0\text{mm}$
Floating fish
feed

$\Phi 2.0\text{mm}$
Floating fish
feed

$\Phi 1.5\text{mm}$
Floating fish
feed

Double-screw Aquatic Feed Extruder



SPHS 130×2 Double-screw Aquatic Feed Extruder

High intelligence, new technology

- Precise and unique double-screw structure increases oil content up to 22%.
- Increase the absorption rates of oil for animals.
- Advanced hole layout technology and die hole structure make pellets uniform and smooth.
- Use PLC Touch Screen Technology to realize man-machine dialogue and switch between manual and automatic operation.

Low energy consumption and high quality

- Long service life, mould and gear > 5000h.
- It can process fast sinking feed (such as shrimp feed) with about 30% starch.
- Produce 100% floating feed and 100% sinking feed only with a kind of screw.
- Reduce the dependence of feed formula and save the cost of raw materials.
- The output of sinking feed can be increased by 10%-20%.

Type	Main power(kW)	Production capacity(t/h)
SPHS 130×2	280(for small particles)	2-5 0.8 Die hole (floating and sinking feed)
	315/355/400	9-14 3-8 Die hole (floating feed)
	315/355/400	7-9 3-8 Die hole (sinking feed)

Raw Material Extruder



SPHG 8000c Raw Material Extruder

Advanced structure, multi-purpose machine

- Multi-purpose, replacing a small number of parts. It can extrude soybean, corn, soybean meal, rice bran and other raw materials with different characteristics.
- The main transmission box has a large oil storage capacity and is made of cast steel material, which has good heat dissipation and ensures stable and reliable transmission.
- The wearing parts like screw, bushing and so on, are made of wear-resistant alloy material, which has long service life and reduces the cost.

Good extruding effect and high maturing degree

- High temperature, high pressure and high shearing can effectively sterilize, and improve the digestibility of protein and starch.
- Easy to handle oil and increase the oil output.
- Urease activity for soybean extruding $\leq 0.2\text{UA}$, good maturing effect in the production of piglet feed.



Corn extruded feed

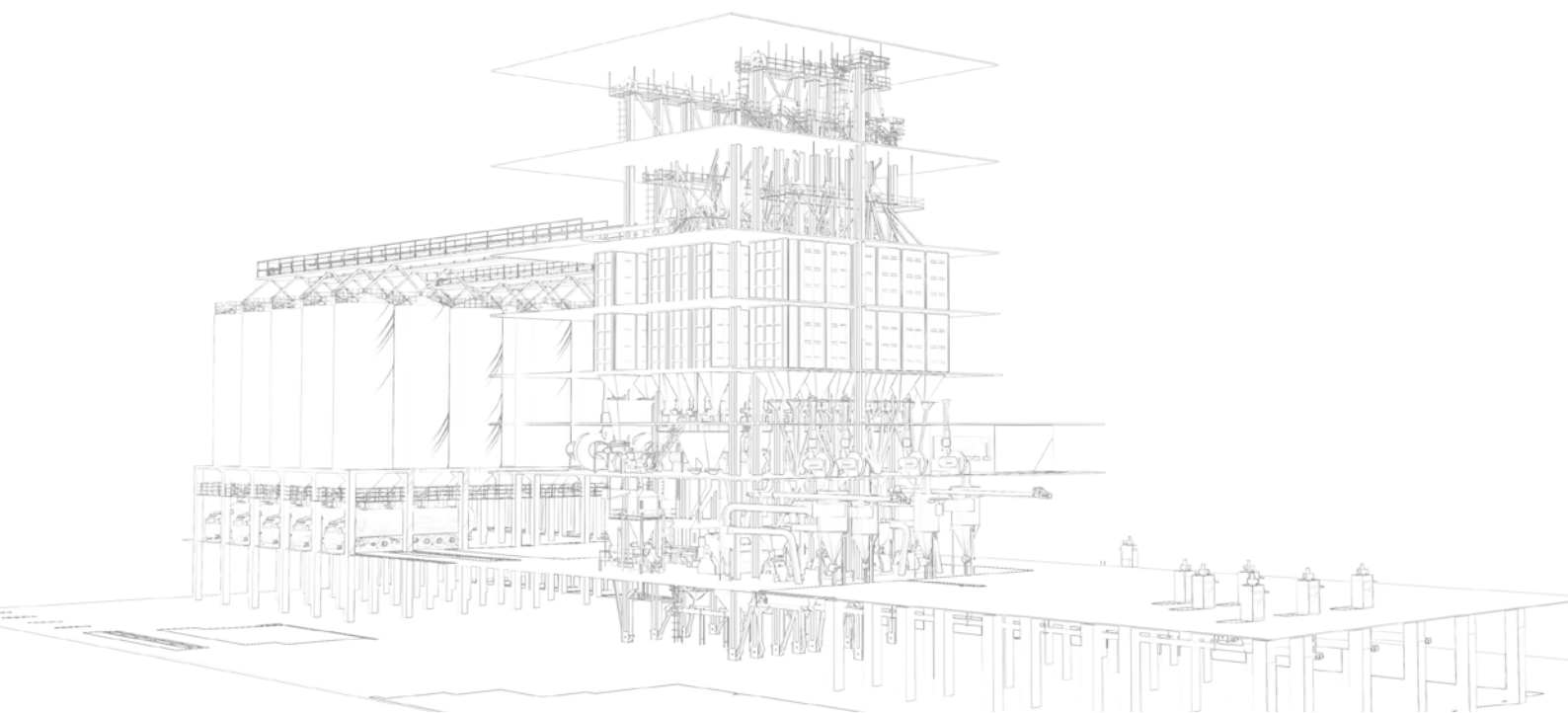


Soybean meal extruded feed



Soybean extruded feed

Type		SPHG 2500b	SPHG 3200b	SPHG 5000b	SPHG 5000c	SPHG 8000c
Main power(kW)		55/75	90/110	110/132	110/132	200/250
Production capacity(t/h)	Soybean	0.6-1.8	1.5-2.5	2.8-3	3-4	4-9
	Soybean meal	1.0-2.5	3-4	4-5	4-6	5-10
	Corn	0.8-1.2	1.0-1.5	1.5-1.8	1.5-2.5	2.5-4.5





Auxiliary Equipment

Create Benefits and Improve Value

■ Cooler	91
■ Crumbler	93
■ Screener	95
■ Packing Scale	97
■ Distributor/Pulse Filter	99
■ Cleaning Sieve	100
■ Batching Scale	101
■ Pellet Die	102
■ Liquid Coater	103
■ Liquid Adding Equipment	105
■ Automatic Control System	107
■ Straw/Pasture Processing Equipment	109
■ Conveying Equipment	111
■ Dryers	113
■ Feed Unit	114



SKLX Impeller Cooler

Scope of application

- Mainly applicable to the cooling of various pellet materials.

Main Features

- Use counter-flow cooling principle, full and uniform cooling.
- Use impeller rotating discharging mechanism to discharge.
- The discharging mechanism runs smoothly and reliably, the discharging is smooth and without residue.
- The temperature of pellets is not higher than room temperature by +3-5°C after cooling.
- Use mechanical leveling device, the discharging is accurate and sensitive.

Type	SKLX 4A	SKLX 6A	SKLX 8A
Production capacity(t/h)	10	15	20
Cooling time(min)	not less than 6-10min		
Material temperature after cooling	not higher than room temperature by +3-5 °C		
Power(kW)	1.5+0.55	1.5+0.75+0.37	1.5+1.5+0.37



SKLN Counter-flow Cooler

Scope of Application

- Mainly applicable to the cooling of various pellet materials.

Main Features

- Use counter-flow cooling principle, full and uniform cooling.
- Use special slide valve discharging mechanism to discharge.
- The discharging mechanism runs smoothly and reliably, the discharging is smooth.
- The temperature of pellets is not higher than room temperature by +3-5°C after cooling.
- Use mechanical leveling device, the discharging is accurate and sensitive.

Type	SKLN 1.5	SKLN 2.5	SKLN 4B	SKLN 6B	SKLN 8B	SKLN 10B	SKLN 12B	SKLN 15
Production capacity(t/h)	3	5	10	15	20	25	30	35
Cooling time(min)	not less than 6-10min							
Material temperature after cooling	not higher than room temperature by +3-5 °C							
Power(kW)	0.75+0.55	0.75+0.55	1.5+0.75	1.5+0.75+0.37	1.5+1.5+0.37	1.5+1.5+0.37	1.5+1.5+0.37	2.2+1.5+0.37



SKLB Counter-flow Cooler

Scope of Application

- Mainly applicable to the cooling of various lumpy, slice, pellet materials such as pellet, expanded and extruded feed, especially for the cooling of expanded and extruded feed.

Main Features

- Use counter-flow cooling principle, full and uniform cooling.
- Swinging discharging mechanism with flexible hydraulic control system makes the discharging uniform and fluent, and the speed is adjustable.
- SKLB6 and the above models use special rotary blending mechanism to make the materials more uniform.
- Use mechanical leveling device, the discharging is accurate and sensitive.

Type	SKLB 1. 5A	SKLB 2. 5A	SKLB 4A	SKLB 6A	SKLB 8A	SKLB 10A	SKLB 12A
Production capacity(t/h)	3	5	10	15	20	25	30
Cooling time(min)	not less than 6-10min						
Material temperature after cooling	not higher than room temperature by +3-5 °C						
Power(kW)	0.55+1.5	0.55+1.5	0.75+1.5	0.75+1.5+0.37	1.5+1.5+0.37	1.5+1.5+0.37	1.5+1.5+0.37



SWDB Pellet Stabilizer

Scope of Application

- Mainly applicable to producing fish feed, high-grade livestock and poultry feed.

Main Features

- The particle material is matured to improve the maturing degree and gelatinization degree.
- Swinging discharging mechanism with flexible hydraulic control system makes the discharging fluent without accumulation.
- The jacket steam mode ensures good preheating effect and high utilization rate of steam.

Type	SWDB 2a	SWDB 4b	SWDB 6b	SWDB 8b
Production capacity(t/h)	1-3	3-5	5-8	6-10
Volume(m ³)	2	4	6	8
Stable time(min)	30-60	30-60	30-60	30-60
Power(kW)	1.5+0.55	1.5+1.1	1.5+1.1	1.5+1.5+0.37



SSLG-series Double-roller Crumbler

Scope of application

- Mainly applicable to the crushing of pellet feed in feed factories, and also for the crushing of soybean, corn and soft minerals, etc.

Main features

- It uses the differential speed principle of rollers to extrude and shear the materials, which breaks the large particles into irregular small particles.
- Roll protection device makes the roll automatically avoid collision when encountering hard foreign bodies, and protects the roll from damage.
- High efficiency, low noise and durable.

Type	SSLG 15×80	SSLG 15×100	SSLG 15×150	SSLG 20×170
Main power(kW)	4	5.5	7.5	11
Production capacity(t/h)	2-4	3-6	5-10	10-20



SSLG Series Three-roller Crumbler

Main features

- Feeding roller driven by frequency conversion deceleration motor is equipped above the rollers, uniform feeding and individually adjustable, moderate and accurate crushing.
- Special roll tooth profile is used for the crushing of $\phi 0.8$ shrimp feed, pretty feed appearance and low powder content.
- Equipped with synchronous gap adjusting device.

Type		20×80a	20×100a	20×140a
Main power(kW)		5.5+1.1	7.5+1.1	11+1.1
Production capacity(t/h)	Chicken feed	3-6	5-8	8-12
	Shrimp feed	0.5-1	1-1.5	1.5-2



SSLG Series Three-roller Crumbler with Feeding Roller

Main features

- Feeding roller driven by frequency conversion deceleration motor is equipped above the rollers, uniform feeding and individually adjustable, moderate and accurate crushing.
- Special roll tooth profile is used for the crushing of $\phi 0.8$ shrimp feed, pretty feed appearance and low powder content.

Type		25×170	30×180
Main power(kW)		18.5+1.1	22+1.1
Production capacity(t/h)	Chicken feed	12-20	15-25
	Shrimp feed	2.5-4	4-6

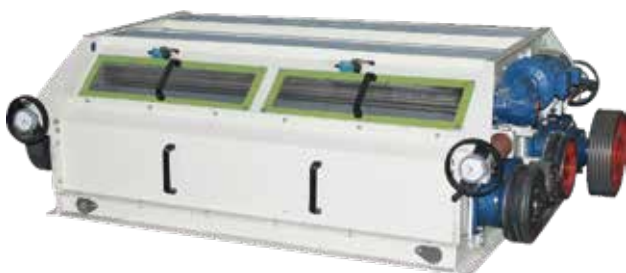


SSLG 25×130×4 Four-roller Crumbler for Laying Hen Feed

Main features

- Four-roller crumbler for crushing laying hen feed.
- Double reducer driving, large transmission torque, stable and reliable operation.
- Gradual crushing, high crushing efficiency, uniform fineness of finished products.
- The self-cleaning roll structure design can reduce the residue and avoid cross-contamination.

Type	25×130×4
Main power(kW)	15×2+1.1
Production capacity(t/h)	8-12



Four-roller Crumbler with Feeding Roller for High-grade Chicken/Shrimp Feed

Type		20×140×4	25×170×4
Main power(kW)		11×2+1.1×2	18.5×2+1.1×2
Production capacity(t/h)	Chicken feed	15-26	25-40
	Shrimp feed	2-5	4-9



SFJH 210×2 Rotary Screener

Scope of application

- Widely used for material classification of many industries like grain, feed, flour, food, chemical industry, sugar, metallurgy, especially suitable for the classification of particle feed.

Type	SFJH 80×2e-c	SFJH 100×2e-c	SFJH 125×2F
Power(kW)	1.5	2.2	3
Particle feed output(t/h)	5-8	8-10	8-12
Powder feed output(t/h)	3-5	5-7	6-8

Main features

- Special balance mode, the inertial force in all directions is balance, small vibration, and low noise.
- Belt transmission, simple and reliable, easy and fast replacement.
- Imported NSK bearings to minimize the error rate.
- High-rigidity sieve vessel and heavy frame, durable and suitable for low frequency rotary motion.
- Streamline design inside, without material deposition and cross-contamination.
- 80-165 series use high elastic composite material as the elastic support plate, effectively reducing the noise.
- 185-210 series use elastic supporting structure.
- The whole transmission system and sieve vessel can be suspended on the prefabricated suspension structure of building, and can be used for the suspension of floor type frame base.
- Transmission box uses belt transmission mechanism, stable and reliable operation.

SFJH 150×2N-C Rotary Screener

Scope of application

- It is used for screening and classifying of powder or pellet feed, initial cleaning of raw materials in feed mills, and classification of the intermediate products after secondary crushing in large and medium feed factories.

Main features

- Drive and balance structure innovation patents. Stable, efficient and high output.
- Stable performance, safe and reliable.
- Flexible installation, convenient replacement and simple operation.



Type	SFJH 150×2	SFJH 165×2	SFJH 185×2	SFJH 210×2
Power(kW)	5.5	5.5	7.5	15
Particle feed output(t/h)	10-16	15-20	18-25	30-45
Powder feed output(t/h)	8-12	10-15	12-18	25-35



SFJH 210×2z Rotary Screener

Scope of application

- It is used for screening and classifying of powder or pellet feed, initial cleaning of raw materials in feed mills, and classification of the intermediate products after secondary crushing in large and medium feed factories.

Main features

- Use special balance mode to make the rotary motion in plane under the inertia force, ensuring small vibration, low noise and low demand for the strength of support.
- The transmission mechanism with combined belt has simple and reasonable structure and long bearing life.
- Combining the advantages of circular motion and reciprocating linear motion, and equipped with cleaning device, it has high output, high screening efficiency and low power consumption.
- Flexible installation, convenient replacement and simple operation.

Type	SFJH 210×2Z
Power(kW)	5.5
Particle feed output(t/h)	30-45
Powder feed output(t/h)	25-35



SFJZ100 Vibratory Screener

- It is widely used for feed screening and classifying of pellet feed, and initial cleaning of raw materials in feed mills.
- It can be also used for screening and classifying of raw materials and finished products in many industries like grain, food, chemical, sugar, mining, paper and so on

Type	SFJZ 80×1	SFJZ 100×1	SFJZ 150×1
Power(kW)	0.37	0.4	0.75
Production capacity(t/h)	4-12	6-15	20-25

Packing Scale



SDBY-II(S) Packing Scale



SDBY-P Packing Scale



SDBY-F Packing Scale



SDBY-II Packing Scale

- Widely used for flow control and rated packaging in many industries like feed, grain, port storage, cement, chemical industry, building materials and so on.
- With the special instrument for packing and weighing as the core and the logic combination of programmable logic controller, precise weight sensor is output to detect the weight signal to complete the functions of bag clamping, fast/slow feeding and so on, so as to realize the weight packaging of different specifications.
- Suitable feeding mechanism ensures the rapid flow of materials. All parameters are input by the panel. Automatic control of fast and slow feeding, bag clamping and bag loosening.
- Intelligent weighing instrument can display gross and net weights at the same time.
- Automatic tare-removing function, automatic tracking, automatic detection and correction of weighing errors.
- With the function of accumulative package number display, the whole system is equipped with dust suction outlet to improve the working environment.
- Data can be collected into the computer system, automatically counting the weight, package number, error of each finished product, and the data can be entered into ERP system.



SDBY-Z Bulk Material Scale

- Clearance conveying and static metering, with cumulative or batch quantitative mode optional.
- Close weighing structure, reduce dust leakage and improve working environment.
- The measuring bucket and buffer bucket are lined with wear-resistant layer to improve the service life of the equipment.
- Reasonable air balance system further improves the accuracy of weighing.
- Receiving/delivering function, automatic scaling function.
- Perfect data management and report printing functions.
- Computer interface output.
- Data can be collected into the computer system, automatically counting the weight, package number, error of each finished product, and the data can be entered into ERP system.

Name	Type	Range (kg/bag)	Speed (bag/min)	Accuracy	Voltage	Application scope
Belt feeding	SDBY-P Single	15-50	8-10	Static $\pm 0.1\%$ Dynamic $\pm 0.3\%$	380V	Concentrated feed, chemical pieces, fibrous bio-fertilizer, particle fertilizer
	SDBY-P (S) Double	15-50	10-12		380V	
	SDBY-P (I) None	15-50	5-7		380V	
Auger feeding	SDBY-F Single	15-50	5-7		380V	Powder feed, concentrate, premix, chemical powder feed
	SDBY-F (S) Double	15-50	10-12		380V	
	SDBY-F (I) None	15-50	3-4		380V	
Gravity feeding	SDBY-II Single	15-50	6-8		220V	Particle feed, corn, wheat, seed, particle fertilizer (urea)
	SDBY-II (S) Double	15-50	10-12		220V	
	SDBY-I (I) None	15-50	5-7		220V	
Vibratory feeding	SDBY-Z Single	1-5	6-10		220V	Feed, chemical raw materials, sucrose, laundry powder, soybean powder, milk powder
	SDBY-Z (S) Double	1-5	10-18		220V	
For oil factory	SDBY-70-II Single	50-70	6-8	Static $\pm 0.1\%$ Dynamic $\pm 0.3\%$	220V	Soybean meal, rapeseed meal, cotton meal and sunflower meal
	SDBY-70-II (S) Double	50-70	8-10		220V	
	SDBY-50-I None	10-50	3-5		220V	
For rice factory	Single	5-25/25-50	5-7		220V	Rice, feed
	Double	5-25/25-50	10-14		220V	



TFPX Series Rotary Distributor

- Distributor has common, simple and complex self-suction types.
- TFPX series rotary distributor can automatically adjust and fix position, material can be conveyed into the predetermined position by its self-flow.
- It is a long-distance control equipment which can supply material from one point to various points, widely used for the entry of raw materials into warehouse and the entry of intermediate products into batching bin.
- It has compact structure, accurate positioning, fast input and output of materials. It is stable and reliable and can automatically clean the internal dust.
- Easy operation and maintenance. It is the best replacement for screw distributor, and the ideal accessory equipment for feed and flour industry.

Type	4 × Φ200	6 × Φ200	10 × Φ200	10 × Φ300	12 × Φ250	14 × Φ250	12 × Φ251
Power(kW)	0.55	0.55	0.55	0.55	0.75	0.55	0.55
Production capacity(t/h)	30	30	30	50	50	50	50



TBLMY Cylinder Pulse Filter



TBLMFa Square Box Pulse Filter

- It is widely used for dust separation of dusty gases. It is suitable for many industries, like food, grain, medicine, building materials, chemical.
- The box is square, firm and beautiful.
- Bottom suction feeding is conducive to waste recovery.
- Large air handling capacity, small floor area and low noise.

Cleaning Sieve



SCY Series Cylinder Cleaning Sieve

- It is mainly used in receiving, cleaning and pre-cleaning raw materials of rice, feed, food, chemical industry, etc.
- The sieve plate with different specifications can be chosen for cleaning and pre-cleaning of wheat, corn, rice, oil and other materials.

Type	SCY 50a	SCY 63a	SCY 80a	SCY 100a	SCY 130a
Power(kW)	0.55	0.55	0.75	1.5	3
Production capacity(t/h)	10-15	10-20	25-35	50-60	100-120

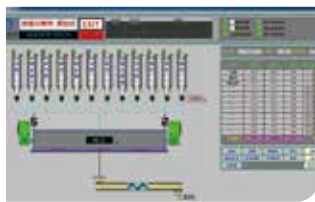
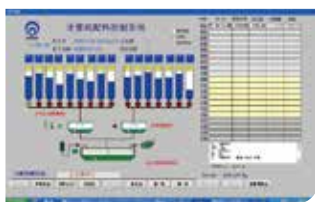


SQLT Series Cleaning Sieve

- It is mainly used in compound feed mills and powder cleaning factory.
- It can effectively separate the straw, stone, paper and other sundries, so that the material can pass through other equipment smoothly, effectively ensuring the regular working of the equipment.
- The sieve can also be used for sieving, crushing or removing agglomerated materials after mixing, to ensure the quality of the compound feed.

Type	SQLT 60×50×100b	SQLT 75×65×140b	SQLT 90×80×160b	SQLZ 125×100×200b
Power(kW)	5.5	7.5	11	15
Production capacity(t/h)	10-20	20-30	50-60	100-120

Batching Scale



- Real-time display of the whole process of batching.
- Equipment breakdown warning is equipped.
- Inching or frequency conversion is used for feeding and residual material compensation to improve batching accuracy.
- Adaptive optimization control of minimum dynamic error and the fastest batching speed.
- It has sound and light alarm function.
- Production parameters such as mixing time and mixer discharge time are input by the user.
- Automatic distribution of the material, to ensure recipe time balance.
- Automatic calibration function.
- With traceability function, bar code and LED screen are used to control manual feeding.
- It realizes remote transmission of formula, power off protection function, automatic storage capacity management, and real-time display of material weight in the batching bin.

- Batching Accuracy: static $\leq 0.1\%$ dynamic $\leq 0.2\%$
- Batching Speed: over 15 batch/hr
- Batching Capacity: 50-5000 kg



SPLG W200 Microelement Batching Scale

- Siemens PLC is used in the system and remote maintenance interface is reserved.
- Precise control of batching system to ensure feed quality, while providing traceability of quality.
- The system has storage capacity display and storage management function.
- The feeding port is equipped with a pneumatic lock, and the barcode scanning is used to prevent material from being misplaced. The dust removal interface is arranged to reduce the dust leakage.
- The bin has a vibrating function to effectively prevent the bin wall from arching.
- Modular design of the feeding system, and the number of feeding systems can be freely combined according to the variety of raw materials.
- Variable frequency motor is used to realize automatic speed changing of the batching process to ensure the efficiency and precision.
- Belt conveyor makes material conveying process smooth and improves batching accuracy.
- The fully-sealed cutting door effectively prevents the material from slipping freely, ensuring controllable batching accuracy.
- Self-cleaning metering bucket reduces residue and avoids cross contamination.



Strengths

- Quality forging material are selected, while other companies select casting material.
- It uses imported gun drill and multiple drills, the hole is formed at one time with high smoothness, beautiful appearance and high output.
- American vacuum oven and continuous quenching furnace to ensure the service life is doubled.
- Strong R&D helps customers to design compression ratio and strength according to unique requirements, to ensure the discharging and pellet appearance.



New developed shrimp feed dies with high opening rate

- IDAH 530 Ø1.6mm
- Opening rate of 32000 hole
- IDAH 530 Ø1.2mm
- Opening rate of 42000 hole

Liquid Coater



SYPG 850M Drum Type Liquid Coater

- Excellent afterward adding technology can effectively supplement the loss of nutrition in the pelleting process, and spray the pellet surface with oil, enzyme, vitamin, organic acid, microorganism and so on.
- The spray liquid is fine and in full contact with the pellet surface with high uniformity.
- Large door structure, convenient and efficient for cleaning the drum.
- Special sealing, no dust and oil leakage, ensure the environment clean and tidy.
- Automatic control of the addition with more accurate measurement.
- The pellets have balanced nutrition, more palatability and disease resistance.

Type	Production capacity(t/h)	Spraying ratio	Accuracy	Drum power(kW)	Conveyor power (kW)	Drum speed (rpm)
SYPG 850M	3-15	1-8%	≤1%	2.2	0.75	10.5
SYPG 1200	15-25	1-8%	≤1%	3	0.75	7



Door Cover Coater of Pellet Mill

- The high-pressure nozzle is installed on the door cover, and the liquid from the nozzle is in full contact with the feed surface to ensure the uniform rate of feed spraying, and the water-resistant, absorption rate of the feed.
- The touch screen can display the total amount, theoretical flow and instantaneous flow.
- Volume and proportion of addition can be set by touch screen and stored in memory.
- All setting parameters are provided with power off protection.
- Both manual and automatic functions, to ensure that the microcomputer works properly even if it breaks down.
- Built-in PLC, automatic control gear pump speed and combination of sprayers.
- Automatically detect the feed output, generate production parameters, and automatically adjust the amount of added liquid according to the set proportion.
- Spray pressure and amount can be automatically changed by the working frequency of gear pump.
- The liquid heating device is reserved, animal fat can also be sprayed at lower temperature.
- High precision flowmeter and anti-interference ability of the transformer amplifier, to ensure addition accuracy.



ZC-SYPL Automatic Afterwards Oil Coater

- ZhengChang fuzzy control technology is adopted to automatically control the oil addition according to the flow rate of the pellet and the set proportion of oil addition.
- The system is designed with accurate balance to automatically detect the flow of materials, and equipped with high-precision liquid weighing scale to ensure the accuracy of oil measurement.
- The belt conveyor is adopted to improve the evenness of oil spraying and avoid agglomeration caused by nozzle dripping.
- The belt conveyor has a scraper between each pitch to adjust the gap between the conveyor and the drum to reduce the residue of feed.
- Low installation height, compact structure, saving investment cost and installation space.
- High-performance atomizing nozzle is adopted to ensure good atomization effect.
- Micro-liquid spraying nozzle is reserved, which can spray both oil and micro-liquid on the surface of feed at the same time.
- The finished product has good smoothness, low powder content and beautiful appearance.
- The control system has the function of spraying oil and micro-liquid at the same time.

Type	SYPL 35	SYPL 40	SYPL 50
Power(kW)	9.75	10.10	10.50
Production capacity(t/h)	≥6	≥10	≥15
Liquid addition ratio %		1~4	
Uniformity		≥90%	



SSHJ 2z Paddle Type Vacuum Coating System

- Two bevel gear reducers drive two rotors respectively with high driving efficiency.
- Special shaft-end seal, reliable vacuum airtight performance. The internal cavity pressure can be below 60kPa within 1min, and rise ≤ 5kPa after vacuuming within 10min.
- Multi-path sprayers make good atomization effect. Easy to dismantle and maintain sprayers.
- Stainless steel is used for parts exposed to raw materials, to ensure the stability of pellets.
- The unique design rotor and discharge door reduce the crumbing rate of pellets.
- Ensure the accuracy and evenness of coating, greatly increase the adding amount of liquid.
- Two kinds of liquid can be added into aquatic and pet food with a ratio of 1%-30%, powder is also available for adding.
- Oil seeps into the pellets, preventing moisture from entering, so that keep pellets dry for easy storage.

Type	Effective volume (m³)	Capacity (t/h)	Spraying Ratio (%)	Mixing Capacity (kg/batch)	Working time per batch (min)	Power (kW)	Uniformity
SSHJ 1z	1	1-3	≤30	300-450	≤8	1.5+7.5	95%
SSHJ 2z	2	4-7	≤30	600-900	≤8	22+7.5	95%
SSHJ 4z	4	8-15	≤30	1200-1800	≤8	37+15	95%



SYTVc Series Weighing Type Oil Adding Equipment

- It is used for weighing the oil in batches and conveying a certain amount of oil to the mixer with an accuracy $\leq 0.3\%$.
- Each inlet of the adding system is equipped with a solenoid valve to control the opening and closing of the oil circuit. Multi-way oil enters the upper tank through the inlet for weighing. After weighing, the pneumatic ball valve at the bottom will be opened, the oil enters the lower tank, and it will be conveyed by the gear pump to the mixer for material spraying.
- It is synchronized with the batching system, and the oil data is entered into the report system, which can be connected with ERP.

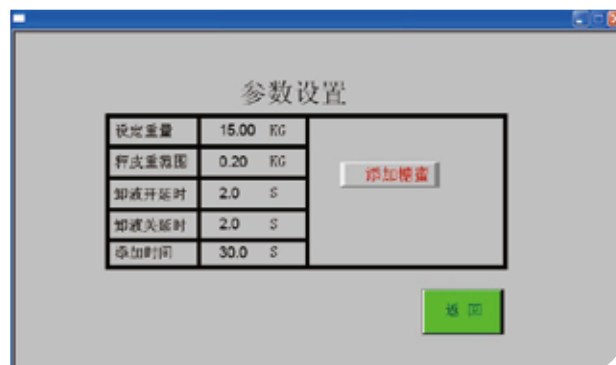
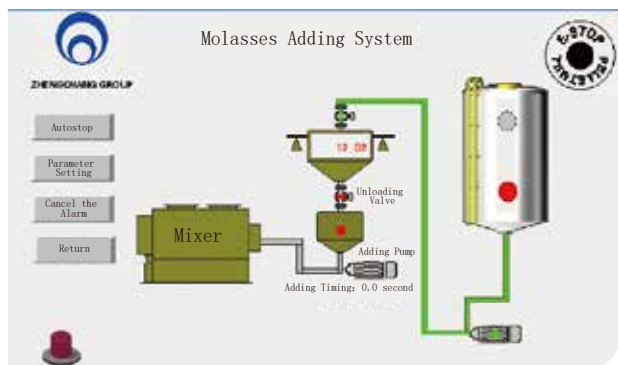
Type	Power(kW)	Liquid Capacity (L/min)	Bucket Volume (m ³)
SYTV 32c	2×1.5+1.5	32	0.1
SYTV 63c	3+2.2+3	63	0.2
SYTV 128c	7.5+5.5+7.5	125	0.3



SYTVb Series Batch Type Oil Adding System

- It is used for batch mixer to add oil or other liquid.
- The system can add oil automatically by using high precision flowmeter, the user only needs to enter the adding amount and the symbol, precision $\leq 1\%$.

Type	Power(kW)	Liquid Capacity (L/min)	Bucket Volume (m ³)
SYTV 32b	2×1.5	32	1
SYTV 63b	3+2.2	63	2
SYTV 128b	7.5+5.5	125	4



Molasses Adding System

- It is widely used in feed, food and pharmaceutical industry.
- The 10.4-inch touch screen is used as the man-machine interface to display various variables and working process.
- There are three working methods: automatic, manual and stop, the system is fully automatic from the start to the end without manual intervention.
- Fuzzy logic control algorithm is used to automatically control the amount of molasses and keep the proportion stable.
- The molasses is heated by water to prevent the molasses from coking.
- Molasses pipes are designed with thermostatic and electric tropical insulation to prevent molasses condensation due to temperature changes.
- Ensure good uniformity of molasses addition without agglomeration.
- Imported high-grade nozzle is adopted for cross-type and three-dimensional spraying, molasses addition is efficient and even.



SZCSJK Feed Quality Optimization System

- Improve feed quality, texture, appearance, taste, energy, density, etc.
- Reduce labor cost, improve production efficiency, realize one person to operate multiple pellet mills, increase the output of about 10%.
- Energy saving, realize real-time control of air volume of cooling fan through frequency conversion control.
- The management level is improved, all kinds of data reports are provided, which is convenient to control the production situation in time.
- Timely detect and supplement the moisture to ensure the moisture content of finished feed is consistent.



Automatic Control System



Automatic Control System of Pellet Mill

- It is used in various types of pellet mills with variable frequency speed feeding and steam conditioning to achieve unmanned operation.
- Reduce power consumption and increase production capacity by more than 10%.
- All production data are saved in the system for production calls.
- Fully cooked feed is beneficial to animal absorption, reduction of powder content and improvement of feed quality.
- Automatic detection of material temperature and the current, automatic adjustment of feeding amount and conditioning temperature.
- The service life of ring die of pellet mill and other wearing parts can be extended, reduce production costs.
- One-touch and unattended operation, save labor costs.
- Remote service is available to realize data sharing, and multiple pellet mills can be operated on the computer to improve the working environment.
- It can effectively control the temperature and improve the quality of aquatic feed.
- It has tailings control module to solve the trouble of manual operation of tailings.

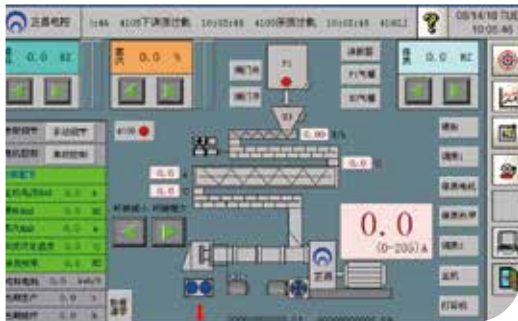
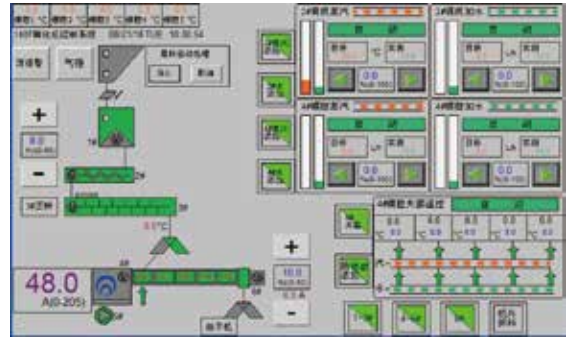


Automatic Control System of Hammer Mill

- The current and feeding amount can be set at will according to the load characteristics of the hammer mill.
- Various data can be controlled in real time to make the equipment in optimum working condition.
- Increase output, reduce labor intensity and power consumption.
- Optional shaft temperature detection, amplitude detection, wind pressure detection, and emergency stop button.
- Maintenance reminder for wearing parts.
- The cloud on the device can be used to realize remote data sharing.



Automatic Control System of Extruder



Automatic Control System of Expander

- It can realize automatic control of the production process of extruder and expander.
- Equipped with high precision sensor and humanized interface.
- Precise control of various data, economic and high-grade control system can be designed according to customers' requirements.
- Optional power management function: automatically calculate the power consumption and generate the curve, which is convenient for customers to adjust production data, reduce power consumption, improve productivity, and can be monitored remotely.
- Optional recipe data management function: manually import the optimal production data, the system will arrange statistics automatically, easy to operation.
- High degree of automation, saving costs.



SYKH 850/680/510 Pasture Cuber



Wide Application

- It is used for pelleting the rice and wheat straw, rape straw, maize straw, cotton straw, cotton shell, beet pulp, oak leaves, palm fiber, grape leaves and various pastures.

Good Stability, Powerful Function

- The feeding adopts special anti-blocking structure, which has the function of fireproof and dust prevention.
- The density of the straw is large, it is pre-pressed by means of internal screw.
- The combination structure of the reducer and the coupling makes large transmission torque and smooth operation.
- Adopt single roller with large feeding angle, high pressing force and good forming effect.
- Variable feeding frequency and multiple nozzles are used to automatically adjust the moisture content.
- Pinch wheel and molding die are made of cemented carbide, with high wear-resistance and long service life.

Type	SYKH 510	SYKH 680	SYKH 850
Main power (kW)	90	132	160
Production capacity(t/h)	1.8-2	2.5-3.0	3.5-4

SFSP Series Pasture Hammer Mill



Main Features

- It is especially used for grinding alfalfa, liquorice, ryegrass, straw and so on.
- The large-scale coarse grinding of pasture has high crushing efficiency and low production cost.
- Side full-width feeding, with conveyor, high degree of automation.
- Wider rotor and super-thick hammer make high grinding uniformity.
- The coupling with rubber type element makes large transmission torque and good damping effect.
- Quick-opening access door is easy to change and clean the screen.
- High quality imported SKF main bearing with long service life.
- High balance and precision rotor makes smooth transmission and low noise.

Type	SFSP 68×108	SFSP 68×138	SFSP 68×168	SFSP 68×218	SFSP 68×108×2	SFSP 68×138×2
Main power (kW)	55/75	90/110	90/110	90/110	(55/75)×2	75×2
Production capacity(t/h)	Φ76mm 3-9	4-8	4.5-14	4.5/14	6-14/8-18	6-18

Note: the raw material is alfalfa, and the moisture is no more than 14%.



SFSP Series Horizontal Wing Type Hammer Mill

Main Features

- Rotating feed, with conveyor, high degree of automation.
- Wider rotor and super-thick hammer make high grinding uniformity.
- Snake spring coupling makes large transmission torque and good damping effect.
- It can crush both bundled straws and bulk straws, wide application.

Type	SFSP 65×82	SFSP 65×128
Main power(kW)	75/90	100/132/160
Production capacity(t/h)	Φ76mm 4-9/5-12	6-14/7-16/8-18

MKLW 200×800×2 Horizontal Cooler for Pasture

Main Features

- It is the cooling equipment in the process of pasture compression. It has high output, low energy consumption, stable operation, and wide application.
- Variable frequency speed conveying, cooling time can be adjusted according to the needs to ensure the best cooling effect.
- The swing distribution device is controlled by variable frequency speed so as to cool the feed evenly.
- Stainless steel chain is used with long service life.
- It can effectively separate the finish product from bulk pasture.
- Equipped with discharge conveyor.



Type	MKLW 200×800×2
Main power(kW)	2×1.1+3+0.75+7.5
Production capacity(t/h)	8-12
Cooling time (min)	≥30



MYZC Series Pasture Evening Bin

Main Features

- Absorbing the advantages of international pasture bin, the design is novel, the structure is reasonable, and the appearance is beautiful.
- The horizontal double screws convey the pasture backward and press it tightly.
- Stable operation, adjustable conveying quantity.
- It is driven by reducer motor which runs at variable speed. The discharge speed is adjustable.
- Compulsory discharge rollers ensure even discharge.
- The pasture can enter the machine evenly by enough mixing space.

Type	MYZC 10	MYZC 20
Main power(kW)	0.55+2×2.2+2×2.1	0.55+2×3+2×3
Production capacity(t/h)	3-5	6-10



TDTG Series Fast (Slow) Bucket Elevator

- It is widely used for vertical conveying of materials in port, harbor, silo, warehouse, feed and other industries.
- The head wheel is coated with refined rubber, which is wear-resistant and skid-proof, improves transmission efficiency, and has a certain slope on the surface to effectively prevent the belt from running off.
- The assembly-type observation window and vent are safe and reliable, and can be equipped with two-cylinder small pulse dust removal to effectively prevent dust explosion.
- Equipped with stop reversing device or auxiliary transmission device to effectively prevent blockage caused by shutdown, which is easy for installation and maintenance.
- The barrel adopts special folding process with high strength and good sealing performance.
- Equipped with high strength and light weight plastic bucket, light weight and wear-resistance, improves output and reduces energy consumption.
- Using high strength bucket belt or PVC bucket belt, low elongation, high durability and reliability.
- The machine base can be installed with along or reverse feeding hopper to meet different needs of users.
- The frame tensioning device adopts gravity tensioning or screw tensioning.
- Optional automatic deviation alarm and speed monitoring system.
- All parts impacted by materials are equipped with removable wearable plate.

Type	TDTG 36/18	TDTG 36/23	TDTG 36/28	TDTG 50/23	TDTG 50/28	TDTG 60/30	TDTG 60/33	TDTG 80/46
Head diameter (m/s)	Φ360	Φ360	Φ360	Φ500	Φ500	Φ600	Φ600	Φ800
Max. lifting height(m)	40	40	40	45	45	45	50	50
Max. power (kW)	11	15	15	18.5	22	30	55	75
Production capacity (t/h)	6-15	15-20	20-25	25-40	40-60	60-80	80-150	160-240



TGSS Series Large Type En-Masse Conveyor

- It is widely used in horizontal or inclined conveying of materials in port, harbor, silo, feed and other industries. It is suitable for multi-point feeding and discharging.
- Equipped with over-load starting device, anti-blocking and anti-chain-breaking alarm device, to ensure the stability and reliability of the equipment.
- The guide rail is made of specially treated wear-resisting material or laid with wearable plate, which has long life and low noise.
- The scraper is made of polyurethane materials, which is wear-resisting, low noise.

- Chains are patented products of our company with high strength, wear-resistant and long delivering distance.
- The tail is equipped with chain tensioning device, easy operation and reliable sealing.
- Equipped with anti-blocking device and speed monitoring system.
- The scraper is equipped with adjustable or support device, beautiful appearance, easy installation and maintenance.

Type	TGSS 20	TGSS 25	TGSS 32	TGSS 40	TGSS 50	TGSS 63	TGSS 80	TGSS 100	TGSS 120	TGSS 140
Max. conveying length(m)	40	40	40	40	40	50	50	50	50	60
Conveying speed (m/s)	0.4	0.4	0.4	0.4	0.4	0.6	0.8	0.8	0.8	1.0
Conveying efficiency	0.8	0.8	0.75	0.7	0.7	0.65	0.65	0.65	0.65	0.7
Production capacity (t/h)	20-40	40-60	60-80	80-130	130-200	200-430	430-720	720-870	870-1050	1050-1600



TGSU a Series Self-cleaning Conveyor

- It is widely used in horizontal conveying of powdery materials in port and feed industry.
- The feeding port can be installed as required for direct feeding and side feeding.
- U type trough facilitates better adaptability and self-cleaning function.
- The semicircular scraper is made of vinyl or nylon material, which has the traits of anti-wearing and low noise.
- Chains are patented products of our company, which features highly wear-resistance, long service life and low noise.
- The riding wheel can effectively reduce the resistance of the scraper chain, which can reduce noise and shakes, save electricity.
- The base plate can be replaced to extend the service life of the conveyor.

Type	TGSU 16	TGSU 20	TGSU 25	TGSU 32	TGSU 40
Max. conveying length(m)	40	40	40	40	40
Conveying speed (m/s)	0.4	0.4	0.4	0.4	0.4
Conveying efficiency	0.65	0.7	0.7	0.7	0.7
Production capacity (t/h)	10-15	15-20	20-30	30-50	50-80



DDQ Series Air-cushion Conveyor

- It is widely used in horizontal or inclined conveying of materials in port, harbor, silo, warehouse and other industries.
- The air-cushion conveyor uses a thin film instead of the roller, which greatly improves the operating conditions of the belt and reduces the friction resistance.
- The Air-cushion conveyor is a fully enclosed structure, featuring small dust, low noise, green environmental protection, which in line with the needs of modern industry.
- The head wheel adopts refined rubber coating, the friction coefficient is large, which can effectively prevent slipping and run off, and improve the transmission efficiency.
- The tail adopts the full-sealed self-cleaning returning device, which can effectively solve the problem of material accumulation in the tail.
- According to the length and working condition of the equipment, the screw tensioning mode, fixed rail type gravity tensioning mode, etc. can be adopted.
- Equipped with reasonable access port, observation window and dust-proof port to measure the speed and prevent deflection and blockage.

Type	B500	B650	B800	B1000	B1200	B1400	B1600
Conveying capacity (t/h)	50-100	100-200	200-300	300-600	600-1000	1000-1200	1500-2000

HDX-30 Circulating Dryer



- This kind of dryer is suitable for drying rice, wheat, corn and other grains, especially the fresh grain, the moisture content drops to safe moisture by drying to ensure the safety of the food storage, which is suitable for food processing enterprises, farm, grain depot, the food dealer, seed companies, etc.

Fresh-keeping Drying

- Fully automatic online monitoring system is integrated to effectively control drying conditions, evenly dry, ensure crack rate, germination rate, yellow grain of rice rate, whole polished rice rate, lipase value, viscosity and other important quality indicators, to ensure that the grain has the best quality and taste, and to provide fresh and high-quality raw materials for fresh grain processing and storage.

Mixed-flow Drying, "Multi-usage"

- It overcomes the disadvantages of cross-flow drying, such as easy blockage, low drying efficiency, uneven drying. Mixed-flow drying realizes the drying of a variety of grains, such as rice, wheat, corn, rapeseed, soybean, etc., to achieve "multi-usage".

Environmental Protection

- Customize the most efficient heating system for customers, promote the biomass fuel stove, heat conduction oil furnace, heat pump and other green environmental protection technology.

Low-temperature Drying, Energy Saving, High Efficiency

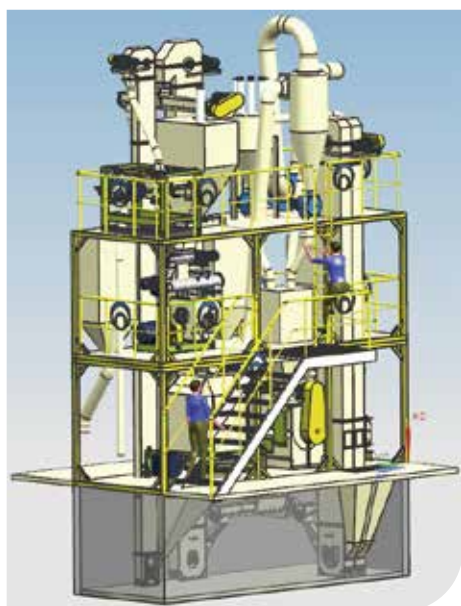
- Drying with low temperature and large air volume to maintain the vitality of grain in the supreme state. Frequency conversion drying technology lead to high dehydration efficiency and no damage to grain.
- Artesian discharge design in the tempering period, which reduces energy consumption. The design of dust removal fan, timely handle the concentration dust during drying to realize clean production.

Fengshen Series Grain Dryer



- Life of more than 15 years, mainly used for drying rice, wheat, corn, rapeseed, soybean, sorghum and other crops and their seeds.
- With mixed flow drying principle recommended by drying specialists, with high heating efficiency, low energy consumption, large capacity, and the grain is kept in good quality after drying.
- The grain discharge device of the dryer is slide valve structure which gives no damage to the material. The discharge speed can be adjusted according to the requirements on the capacity and drying rate. i.e. The drying speed can be adjusted according to the requirement on the seed or commercial grain.

- Corrosion resistant alloy material (stainless aluminum, stainless steel, hot galvanized sheet) is used to against rust, it has the characteristics of wearable, corrosion-resisting, beautiful appearance and long life.
- The whole equipment is manufactured by CNC punching and bending, standardized production, good interchangeability. It can be matched freely and be produced serially to reduce production costs.
- The equipment is multi-functional. The same equipment can be used to dry rice, rapeseed, soybean, wheat, corn and other grains, which can meet the drying requirements of different grains in different harvest seasons, and improve its utilization rate.



SKZH Series Livestock and Poultry Feed Unit

Realize through-train breeding, cost saving, convenient management, and higher returns.

- Special feed unit for farm, which has brand, recipe and management support.
- Equipped with ZhengChang high quality pellet mill, grinder, mixer and other host equipment.
- Less investment, quick response, simple installation operation, convenient management.
- The technology of this feed unit is the same as that of large pig feed plant, which has flexible process, high adaptability and high return.
- This small integrated unit is specially for the small feed plant, we provide a full range of services (including recipe, training, etc.)

Type	SKZH 1800	SKZH 3800	SKZH 4800	SKZH 4800	SKZH 5800	SKZH 5800a
Power (kW)	86.1	121.15	144.5	149.4	177.2	184.9
Production capacity(t/h)	1.5-2	2-3	25	1-4	3-6	3-5



Premix Feed Unit

Good Appearance, Reasonable Layout, Low Residue, Uniform Mixing, Less Dust

- The platform design is beautiful and reasonable, more convenient in operation and maintenance.
- Vertical layout of process flow to prevent cross contamination.
- Mixer with big door, inlet and outlet hoppers are rounded structure, residue < 0.1%.
- The parts in contact with materials such as the single-shaft mixer, pneumatic butterfly valve, hopper, buffer bucket and manual soft seal butterfly valve are made of stainless steel, free of pollution.
- Equipped with pneumatic butterfly valve and air balance device to reduce dust leakage.





Delivering Happiness

Integrated System Service Provider

Create a Better Future with Customers

■ Industry Forum —— Tianmu Lake Forum	117
■ Skill Improvement —— Training Service	119
■ Our Customers	121
■ Blasting Drawing of Pellet Mill	122

Tianmu Lake Forum —— Differentiation, Efficiency, Safety and Intelligence

In 2012, ZHENG CHANG established the Tianmu Lake Forum, which is the only one technical forum for the production management and technology innovation of feed enterprises in China.

At present, ZHENG CHANG has held seven sessions of Tianmu Lake Forum, providing opportunities for senior management personnel and technical experts in the feed industry to exchange ideas, as well as offering standard formulation and release for the production process (technology) in the industry.

As a technical forum, Tianmu Lake Forum has attracted nearly a thousand famous authoritative experts at home and abroad and directors with rich operation experience to join it, and put forward 2400 difficult problems and corresponding constructive solutions.

ZHENG CHANG contributes its wisdom to the development of feed industry in China, and makes positive contributions to the progress from a big feed industry country to a strong feed industry country.



The 7th Tianmu Lake Forum (stability and reliability enables long-lasting development) was held on December 27, 2018.

天目有湖
论坛有道
高鸿宾

Former Vice Minister of Agriculture, President of China Feed Industry Association, Mr. Hongbin Gao, wrote an inscription for ZHENG CHANG.



- Intelligence —— The 5th session of Tianmu Lake Forum.
- Intelligence Leads Feed Industry, Win-win Future —— The first session of Tianmu Lake Forum.
- “New Generation of Feed” fund award.

- Good Strategy, Good Quality, Good Method, Good Technician, Good Result —— The 6th session of Tianmu Lake Forum.
- The 2nd Tianmu Lake Forum “New Generation of Feed” fund award.
- The launching ceremony of Tianmu Lake Forum official website in Chengdu.
- Tianmu Lake Forum held a press conference in Beijing.

Training and Service Customers, Create Value with Skills

ZHENG CHANG has won the satisfaction of customers by holding workshops, trainings, technical seminars to provide quick and thoughtful services, regularly arranging service engineers to visit customers and solve problems in time.



Hosted by ZHENG CHANG Group, supported by China Feed Industry Association and National Grazing Headquarter, the "2018 Summit Forum on Development of Agriculture, Animal Husbandry and Feed in China" was grandly held at Tianmu Lake in Liyang.



ZHENG CHANG held a training conference for more than 60 visitors from 16 countries in aquatic feed processing.



Onsite service of 5-6 t/h shrimp feed project in Mexico.



ZHENG CHANG GROUP has successfully held 49 training courses of feed production management, 26 training courses of feed processing technology and 11 training courses of senior technical personnel, which have trained 8,000 various technical personnel for feed enterprises nationwide. Through the training, the trainees have mastered the theory, broadened their horizons, improved the production management skills, and popularized the knowledge and methods of feed production management, most of the trainees have grown into the front-line backbone of various feed enterprises.



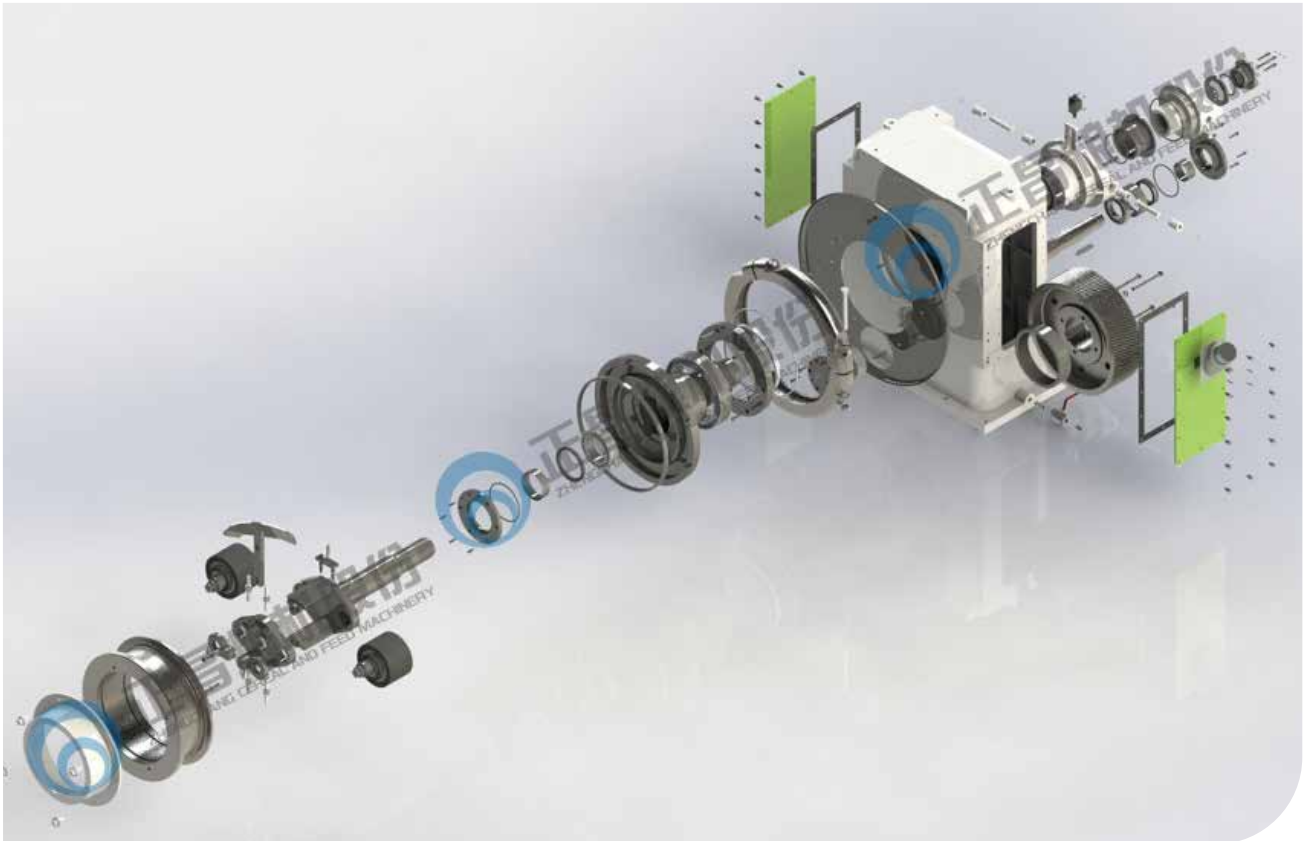
Shuanghui project seminar in Luohe, Henan province.



Piglet feed project seminar — Jinmu in Anhui province.

Our Customers (part)





Blasting Drawings of Pellet Mill

20 international websites with 15 languages, covering more than 30 countries,
building deeper relationships between you and ZHENG CHANG, CHINA

Asia:

www.zhengchang.co.id (Bahasa Indonesia)

www.zhengchang.com.kz (РУССКИЙ ЯЗЫК)

www.zhengchang.com.mm (မြန်မာ)

www.zhengchang.vn (TIẾNG VIỆT)

www.zhengchang.co.in (English)

www.zhengchang.ph (English)

th.zhengchang.com (ภาษาไทย)

www.zhengchang.com.tr (Türkçe)

Europe and America:

www.zhengchang.com.ua (УКРАЇНСЬКИЙ)

www.zhengchang.com/eng (English)

www.zhengchang.com.mx (Español)

www.zhengchang.ru (РУССКИЙ ЯЗЫК)

www.zhengchang.com.br (Brasil)

www.zhengchang.ro (România)

www.zhengchang.hu (Magyar)

www.zhengchang.rs (СРПСКИ)

Africa:

www.zhengchang.co.za (English)

ao.zhengchang.com (Português)

www.zhengchang.fr (Français)

Middle East:

www.zhengchang.ae (ايبوع)

Facebook



Official
Website



Shanghai Address: 25F, No. 159 Zhao jia bang Rd.,
Shanghai, China

Liyang Address: NO.28 Zhengchang Rd., Kunlun
Development Zone, Liyang, Jiangsu, China
Tel: +86 21-64184200 Fax: +86 21-64163299

More product information, Please check out our website at:

www.zhengchang.com/eng